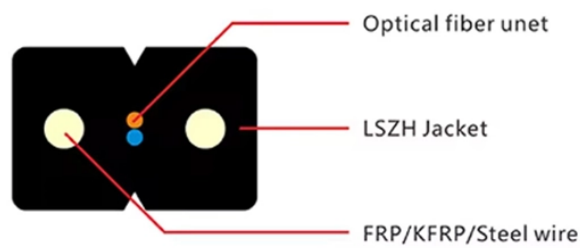


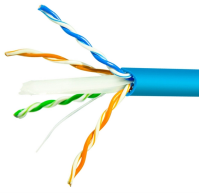
Low-voltage cabinet topology



Low-voltage cabinet topology



Quick 5-minute read: Discover the main types, essential components, and key maintenance tips for low voltage power distribution cabinets. Learn how Qinghao Electric's intelligent ...



Discover the most important design points for UPS input/output cabinets and low-voltage switchgear in data centers, including modular UPS compatibility, neutral conductor sizing, protection ...



A four-level topology (transformer, outlet cabinet, branch box, meter box) automatic identification method for distribution networks is proposed. The method is based on the existing LVICB.



This network connectivity is difficult to obtain accurately due to the complex structure and low level of automation. In this paper, we first propose a four-level topology (which includes ...



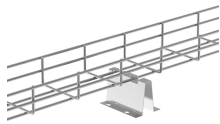
Whether fully assembled, adapted according to your specifications, or developed individually, the system cubicles support the individual creation of added value in control cabinet construction.



Main structural parts are usually welded, while variable or adjustable areas use fasteners (e.g., low-voltage control boxes and consoles). Since sheet metal structures are mostly welded and formed in ...



The most common and probably the simplest power stage topology is the buck power stage, sometimes called a step-down power stage. Power supply designers choose the buck power stage because the ...



This network connectivity is difficult to obtain accurately due to the complex structure and low level of automation. In this paper, we first propose a four-level topology (which includes ...



This article explores the fundamental role of low voltage distribution cabinets, their key features, and the critical technologies that drive their functionality.



A low-voltage network or secondary network is a part of electric power distribution which carries electric energy from distribution transformers to electricity meters of end customers.



In order to select the suitable type of LV panel for any project, many considerations must be taken into account, like whether the panel is installed indoors or outdoors, bottom or top cable ...

Contact Us

For more information, pricing, or custom solutions, please contact us:

Website: <https://www.indzawo.co.za>

Email: sales@indzawo.co.za

Phone: +27 71 296 8473

Address: 22 Quantum Street, Midrand, 1685, Gauteng, South Africa

This document is for informational purposes only. Specifications subject to change without notice.

