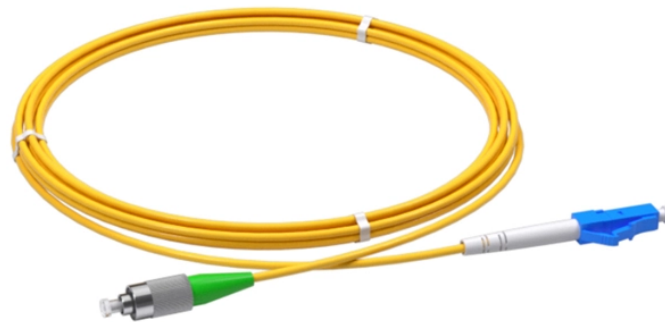


Low-noise fiber optic cable tray sample



Low-noise fiber optic cable tray sample



This document outlines best practices and engineering standards for designing and implementing structured cable and fiber tray systems in modern data centers. It covers design guidelines, ...



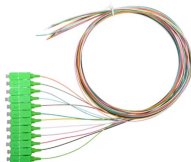
Trays shall be supported at a maximum span of 2.5m by trapeze, wall, floor or channel mounting methods and will not exceed maximum loads as specified by the manufacturer.



There are currently two viable media cable types proven for use in tray carriers in industrial settings: copper cabling and fiber optics. There are a set of common criteria most engineers and system ...



These fibre optic cable trays are halogen-free and therefore generate hardly any smoke (damage) in the event of fire. The Low Smoke - Zero Halogen (LSZH or LS0H) property ensures that the trays meet ...



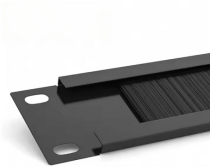
With a wide variety of accessories for mounting and connecting tray sections, Vericom offers a complete and configurable solution that will keep your fiber optic cabling organized and protected.



Hubbell's NEXTFRAME® Ladder Tray is the effective and widely used cable runway that supports and delivers bundles of cable between cabinets, racks, and closets, along walls, and suspended from ...



And with tool-free assembly of all channel sections and transitional fittings, the Fiber Cable Tray System reduces installation and maintenance time, which in turn reduces the total cost of ownership.



Designed to route and protect fiber optic and high-performance copper cabling to and from network cabinets, distribution frames, and other terminal devices.



Fiber management system is designed to protect and route fiber optic patch cords. Its basic components include: straight grooves, ...



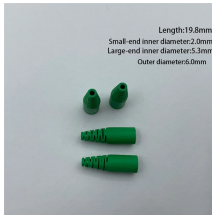
Fiber optic cable management splice trays at Essentra Components US. Download our latest catalog, get free quotes and samples, view 3D CADs and shop 1000s of components online.



NEMA VE 1-2017 Specifies requirements for metal cable trays and associated fittings designed for use in accordance with the rules of Canadian Electrical Code, Part I and the National Electrical Code®



Opticom® Rack Mount Fiber Adapter Patch Panel
RU for 4 FAP's or cassettes: CFAPPBL1



These adapters allow Vericom's 5" wide Fiber
Cable Tray system to quickly and easily connect to
an existing Commscope® Flberguide® or
Panduit® FiberRunner® raceway.

Contact Us

For more information, pricing, or custom solutions, please contact us:

Website: <https://www.indzawo.co.za>

Email: sales@indzawo.co.za

Phone: +27 71 296 8473

Address: 22 Quantum Street, Midrand, 1685, Gauteng, South Africa

This document is for informational purposes only. Specifications subject to
change without notice.

