

Low Loss Adjustment of Armored Pigtail



Overview

Multimode and single-mode pigtail kits shall be compliant with ANSI/TIA-568. Executive Summary: A fiber optic pigtail is one of the most commonly specified yet least understood components in structured cabling. Get the wrong connector type, the wrong polish, or skip proper fusion splicing technique—and you're looking at elevated signal loss, increased back reflection, and a. XFS proposes "3A+G" as the performance and reliability level for our single mode and multimode fiber optic connectors. "3A+G" connector has an average random mated insertion loss of just 0.07dB, exceeding the performance level of IEC 61753-1 Grade B. 6%. Our patch cords and pigtails comply with industry optical and mechanical requirements and they're available in 1- and 2-fiber combinations for your convenience. Good in repeatability and exchangeability. Cables are available on 900 μm (0. This reliable fiber pigtail cable comes with a pre-terminated connector on one end—ready for immediate. A fiber optic pigtail is a short length of optical fiber—typically 0.

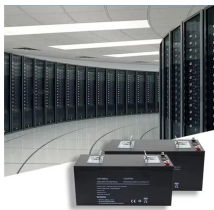
Low Loss Adjustment of Armored Pigtail



Our premium low loss range of pigtails are the perfect choice for telecom, datacenter and critical applications. These pigtails are 900 μm easy strip for ease of stripping and handling in fiber ...



Corning patch cords and pigtails can be ordered in five easy steps. The steps involve the selection of connector(s), fiber count, fiber type, cable type, and length.



The pigtails are low insertion loss and high return loss. Good in repeatability and exchangeability. The pigtail shall be factory assembled with high quality control and 100% test. Provide label for easily to ...



XFS is an OEM specialized in extremely low insertion loss and high return loss fiber connectivity products, exceeding IEC 61753-1 Grade B level and are Telcordia GR-326 and GR-1435 tested.



Multimode and single-mode pigtail kits shall be compliant with ANSI/TIA-568.3-E. Standard insertion loss shall be a maximum of 0.25 dB and low loss shall be a maximum of 0.15 dB for multimode and ...



To ensure long-term stable & low loss fiber connection, besides basic measurement for insertion loss & return loss, it also includes reliability test of fiber pigtailed/patchcords.



Built with OS2 singlemode fiber, it ensures ultra-low insertion loss and excellent return loss, providing stable transmission over long distances.



Understand fiber optic pigtailed — definition, types, and how they differ from patch cords. Learn why pigtailed ensure reliable, low-loss fiber terminations.



Fiber optic pigtail for precise, low-loss terminations in fiber networks. Available in SC, LC, ST, and more for singlemode and multimode applications.



Confused about fiber optic pigtailed—which connector type, which polish, fusion or mechanical splice? Our guide covers LC vs SC, APC vs UPC, splicing methods, and real-world use ...

Contact Us

For more information, pricing, or custom solutions, please contact us:

Website: <https://www.indzawo.co.za>

Email: sales@indzawo.co.za

Phone: +27 71 296 8473

Address: 22 Quantum Street, Midrand, 1685, Gauteng, South Africa

This document is for informational purposes only. Specifications subject to change without notice.

