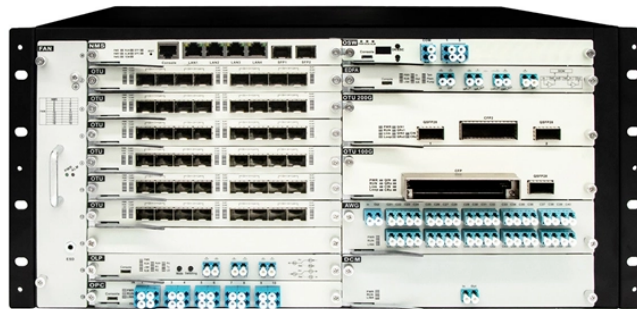


Load-bearing capacity cable tray standards



Overview

The International Electrotechnical Commission (IEC) provides detailed guidelines for cable tray systems under IEC 61537. This standard outlines the construction requirements, testing methods, and performance parameters for cable trays and related support systems. Hubbell's NEXTFRAME® Ladder Tray is the effective and widely used cable runway that supports and delivers bundles of cable between cabinets, racks, and closets, along walls, and suspended from ceilings. The Ladder Tray features light, rugged, tubular steel construction. It is designed for. Ladder cable tray without covers provides for maximum air flow, dissipating heat produced in current carrying conductors. A rung spacing of 6 to 9 inches (150 to 230 mm) is preferable when the cable tray cont d for instrumentation and control applications that require. us-trations without notice. Load rating is independent of width.

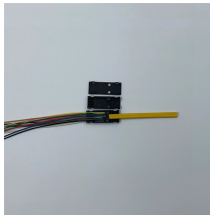
Load-bearing capacity cable tray standards



This article provides a comprehensive framework that governs various aspects of cable tray installations, including the types of cables that are deemed acceptable for use, requirements for ...



STANDARDS AND GUIDES YOU NEED TO KNOW
The following standards define the precautions to be taken when installing and using our products:



IEC 61537 does not specify exact load-bearing values for cable trays. Instead, it defines a standardized load-testing methodology and provides the following evaluation criteria:
Longitudinal deflection: less ...



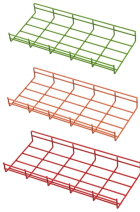
The Cable Tray Institute is making available the current edition of this practical guide for the proper installation of aluminum or steel cable tray systems. These guidelines will be useful to engineers, ...



Under the current CSA standard clauses 4.3 and 6.1.3, it is now possible to vary the maximum design load for tray as a function of its support span. This allows for heavier tray loading if the support span ...



The load-bearing capacity of cable tray systems is directly related to their electrical cable tray dimensions, material thickness, and support spacing. Manufacturers publish load rating tables ...



Commonly called the Load Class, this defines the load-carrying capability of the tray for a specific support span distance. The design and cost of the cable tray is greatly affected by this designation.



IEC 61537 is the internationally recognized benchmark for metal cable tray systems. It applies to cable trays made of steel, stainless steel, aluminum, or other metallic materials. The ...



Cable tray length is selected based on the load to be supported, the distance between the supports (also referred to as the span), and handling and installation constraints.



Cable tray support locations are defined by the NEMA VE-1 and VE-2 Manufacturing & Installation Standards, which specify the requirements for cable tray systems designed for use in accordance ...

Contact Us

For more information, pricing, or custom solutions, please contact us:

Website: <https://www.indzawo.co.za>

Email: sales@indzawo.co.za

Phone: +27 71 296 8473

Address: 22 Quantum Street, Midrand, 1685, Gauteng, South Africa

This document is for informational purposes only. Specifications subject to change without notice.

