

# **Lc Single-Mode Fiber Optic Module 10 Gigabit**



## Lc Single-Mode Fiber Optic Module 10 Gigabit



This data sheet describes the benefits, specifications, and ordering information for the Cisco SFP Modules for Gigabit Ethernet Applications.



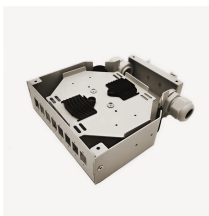
This LC SFP transceiver module is designed to support a 1310nm wavelength, providing up to 1.25 Gb/s data transfers with an up to 12.4-mile range using single duplex core fiber-optic cables.



Easy to Use: 10G-LR transceiver with Advanced DDM Function to ...



Easy to Use: 10G-LR transceiver with Advanced DDM Function to monitor real-time parameter and state on fiber links; It supports hot-swappable, plug and play; SFP+ MSA and SFF ...



TRENDnet's SFP+ Single Mode LC Modules are compatible with standard SFP+ slots found on network switches and fiber converters. Each single mode 10G SFP+ transceiver is equipped with a duplex LC ...



**TESTED FOR COMPATIBILITY:** Hot-swappable in MSA Compliant routers and switches; DDM support reports the transceiver's status to most SNMP network management tools.



This data sheet describes the benefits, specifications, and ordering information for the Cisco SFP Modules for Gigabit Ethernet Applications.



The Intellinet 10 Gigabit Fiber SFP Optical Transceiver Module (model 507479) is fully hot-pluggable, and that allows you to install the module without rebooting your network switch for ...



**10GBase-LR SFP+:** 10 Gigabit Ethernet Single mode SFP+ Module, 10 Gb/s, 1310nm wavelength, Duplex Dual LC, SMF, operates on Single-mode (OS2/OS3) LC fiber cable spans of up to 10km (6.2 ...



Intellinet Network Solutions 10GBase-LR Fiber SFP+ Optical Transceiver Module, model 507479, is the right choice when it comes to connecting two buildings at 10 GbE speeds with single mode fiber. ...



Looking for a cost-effective SFP+ solution that enables higher port densities and greater bandwidth? Choose the 1310-nm Singlemode SFP (LC) 10G optical transceiver, which transmits and receives ...



Find great prices on our 10GBase-LR LC singlemode 1310nm SFP ethernet fiber modules.

## Contact Us

For more information, pricing, or custom solutions, please contact us:

Website: <https://www.indzawo.co.za>

Email: [sales@indzawo.co.za](mailto:sales@indzawo.co.za)

Phone: +27 71 296 8473

Address: 22 Quantum Street, Midrand, 1685, Gauteng, South Africa

This document is for informational purposes only. Specifications subject to change without notice.

