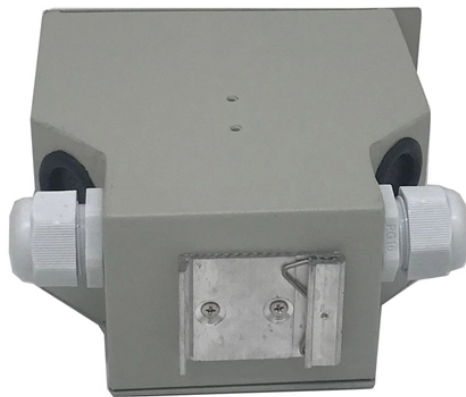


Island use of ONT optical network terminal LPO



Overview

View the TI Optical network terminal unit (ONT) block diagram, product recommendations, reference designs and start designing. Configuring these elements involves several key steps: 1. OLT. A Passive Optical Network (PON) is a fiber-optic access technology that delivers high-speed internet from an Internet Service Provider (ISP) to end users. As a result, it is cost-efficient, scalable, and requires. OLT is an optical network equipment that aggregates and distributes data through multiple Optical Network Units (ONUs) at the customer's premises. Q: What is meant by G-PON?

A: Gigabit PON is a system that handles data rates up to 2.



Island use of ONT optical network terminal LPO



Whether you're an Internet Service Provider (ISP) planning your first FTTH network or expanding an existing one, the deployment of Optical Line Terminals (OLT) and Optical Network ...



View the TI Optical network terminal unit (ONT) block diagram, product recommendations, reference designs and start designing.



Learn about the functions of GPON OLT and ONT in an optical line terminal network. Explore the roles they play in a gigabit passive optical network.



ONT stands for Optical Network Terminal. It is the final endpoint device in a Fiber-to-the-Home (FTTH) network, translating light pulses from the fiber optic line into electrical Ethernet signals.



In short: The OLT (Optical Line Terminal) is the central control unit of a Passive Optical Network (PON). It converts data signals, manages bandwidth, and connects hundreds of users over ...



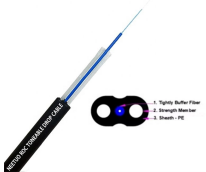
Instead, the network relies on specific components such as OLT, ONU, ONT, and ODN to transmit data using optical signals. In this article, we will explain each component in a simple way ...



A: OLT - Optical Line Terminal, located in the CO or hut, is the interface to the customer and provides the subscribed services. ONT - Optical Line Terminal, located at the customer/subscribers location, ...



In fiber-to-the-home (FTTH) or Gigabit Passive Optical Network (GPON) technology, the Optical Line Terminal (OLT) and Optical Network Terminal (ONT) play crucial roles in ensuring...



A: OLT - Optical Line Terminal, located in the CO or hut, is the interface to the customer and provides the subscribed services. ONT - Optical Line Terminal, located at the customer/subscribers location, ...



The OLT receives data from the core network and converts it into optical signals for transmission over the fiber optic distribution network. It also receives and aggregates data from ...



What is an ONT (Optical Network Terminal)? Also known as an Optical Network Unit (ONU), an ONT is the device installed at the user's location. It marks the endpoint of the fiber - optic ...

Contact Us

For more information, pricing, or custom solutions, please contact us:

Website: <https://www.indzawo.co.za>

Email: sales@indzawo.co.za

Phone: +27 71 296 8473

Address: 22 Quantum Street, Midrand, 1685, Gauteng, South Africa

This document is for informational purposes only. Specifications subject to change without notice.

