

Is the terminal box a switch device



Overview

A junction box, also known as a wire box or terminal box, is a closed container used to fix, protect and connect wires and cables. A device box is a protective enclosure used in electrical wiring systems to safely house and support switches, receptacles, and the required wire connections. They play an important role in a variety of applications, including domestic, commercial and industrial settings.



Is the terminal box a switch device



What Is a Terminal Box? A terminal box is an enclosure used to neatly terminate and organize electrical wires. Inside the box, you'll find terminal blocks, which serve as secure connection ...



What is the difference between a terminal box and a junction box? While both are used for wiring connections, a terminal box specifically includes terminals for organized connections, whereas ...



Terminal boxes are electrical enclosures that are used to house and protect electrical components, such as terminal blocks, relays, and switches. These boxes are typically made of metal or plastic and are ...



The last type of terminal box that we will discuss is the switch box, which is used to control the flow of electricity between two devices. These boxes also come in a variety of sizes and can be made from ...



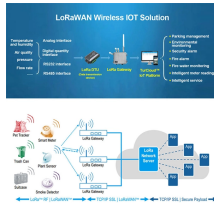
When in heating, the terminal box either maintains minimum airflow or modulates the supply air damper. In order for the terminal box to work properly, the central air-handling unit must provide supply air.



A device box is a protective enclosure used in electrical wiring systems to safely house and support switches, receptacles, and the required wire connections. This foundational component ...



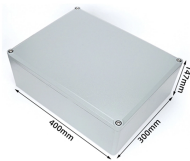
An electrical box is a protective enclosure used to contain wiring connections for devices like outlets, switches, and fixtures. Unless the device is one of the few that includes its own enclosed ...



A switchboard is a large single panel, frame, or assembly of panels on which are mounted (on the face, back, or both) switches, overcurrent and other protective devices, buses, and usually instruments ...



A junction box, also known as a wire box or terminal box, is a closed container used to fix, protect and connect wires and cables. It is usually made of metal or plastic and contains electrical ...



What Is a Terminal Box? A terminal box (often called a terminal enclosure or connection box) is a purpose-built enclosure designed to house electrical junction boxes with terminals.

Contact Us

For more information, pricing, or custom solutions, please contact us:

Website: <https://www.indzawo.co.za>

Email: sales@indzawo.co.za

Phone: +27 71 296 8473

Address: 22 Quantum Street, Midrand, 1685, Gauteng, South Africa

This document is for informational purposes only. Specifications subject to change without notice.

