

Is the switch box a three-level distribution box



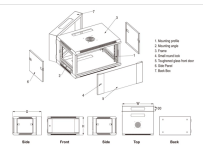
Overview

- **Third-level Distribution Box**: That is, the switch box, which is at the end of the power distribution system and directly provides power for electrical equipment. A distribution box is installed under the main distribution box, and a switch box is installed under the distribution box. Each circuit is protected by its own circuit breaker. You will typically find panelboards in residential, commercial, and light industrial settings, often flush-mounted on. The three-level distribution system refers to a system that distributes electric power through three levels of distribution devices from the incoming power line at the construction site to the electrical equipment.

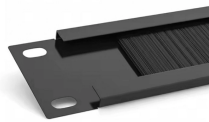
Is the switch box a three-level distribution box



A distribution box is installed under the main distribution box, and a switch box is installed under the distribution box. Electrical equipment is installed under the switch box, forming a three ...



The principle of minimizing distribution distances means that the distances between distribution boards and switch boxes should be kept as short as possible. The main distribution board should be located ...



A distribution panel (or distribution board) acts as an intermediary hub in the power distribution chain. It receives power from a main source, such as a switchboard or transformer, and ...



Connects to end-use equipment via switch boxes, forming a three-tier power distribution system. Residual current devices (RCDs) at both the tertiary (equipment-level) and secondary (zone-level) ...



- ****Third-level Distribution Box****: That is, the switch box, which is at the end of the power distribution system and directly provides power for electrical equipment.



That is, a distribution electric box is arranged under the general distribution box, and a switch box is arranged under the switch box, and electrical equipment is arranged under the switch box to form a ...



Whereas a distribution box is designed to distribute electricity, a switchboard is used to operate and control electrical devices or processes. When specific applications or environments call ...



Switchboards and panelboards are often called “the guts” of a premises wiring system. Article 408 covers the requirements for switchboards and panelboards that control power and lighting circuits. ...



Three level distribution box: a distribution box is set under the main distribution box, a switch box is set under the distribution box, and electrical equipment is set under the switch box to form a three-level ...



Tertiary distribution boxes, or switch boxes, are designated for individual equipment. What are the specific meanings and functions of primary, secondary, and tertiary distribution boxes? The ...

Contact Us

For more information, pricing, or custom solutions, please contact us:

Website: <https://www.indzawo.co.za>

Email: sales@indzawo.co.za

Phone: +27 71 296 8473

Address: 22 Quantum Street, Midrand, 1685, Gauteng, South Africa

This document is for informational purposes only. Specifications subject to change without notice.

