

## Is the cable tray elevation the bottom or the top of the cable tray



### Overview

**Top of Cable Tray** The elevations refer to the top of the cable tray. The cable tray will extend below these elevations. Dust buildup is minimal compared to other types of cable tray, such as ventilated trough or solid bottom. An elevation benchmark (preferably set by the general contractor) can be transferred via laser level or transit to convenient points along the length of the tray run. Once the lengths and quantities of the hangers are. Include scaled cable tray layout and relationships between components and adjacent structural, electrical, and mechanical elements. Show the following: Vertical and horizontal offsets and transitions. During installation, the necessary safety.

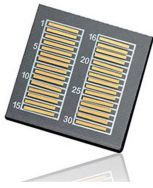
## Is the cable tray elevation the bottom or the top of the cable tray



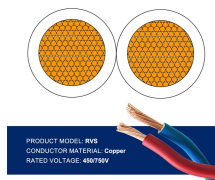
Cables exit out the bottom of the cable trays and into the top of the MCC or switchgear enclosure. For these installations, the cable manufacturer's recommended minimum bending radii for the specific ...



It provides rules for acceptable wiring methods that can be installed in cable trays, including conditions for use. It addresses uses permitted and not permitted for cable trays.



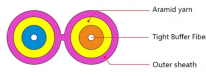
Compare the best cable TV services of 2026. We analyze Xfinity, Spectrum, and Cox based on technical specs, channel lineups, and hidden fees to find the right fit for your home.



Cablelynx delivers fast broadband internet, digital cable, and phone services for your home or business. Stay connected with top-notch service and unbeatable value!



In order to install the cable tray supports, first find the required elevation from the floor to the bottom of the cable tray and establish a level line with a laser or a nylon string.



The bottom layer will be a solid bottom cable trunk for electrical circuits with 150x100mm, while the upper layer will be a basket tray for a structured cabling system with 150x100mm.



For many installations the power cables will exit out the bottom of the cable tray and into the top of the equipment. The cable manufacturer's recommended minimum bending radii for the specific cables ...



Save with deals on reliable high-speed Internet, premium cable TV and sports, 5G mobile service and home phone. Low monthly prices with no contracts.



Cable tray shall be run above water piping. Designer shall provide a 12" vertical working clearance above the cable tray with no continuous obstructions. In addition, a 12" space must be provided on ...



Shop Xfinity Double Play Bundles & Packages. Choose a two-product bundle from Cable TV, Internet or Voice to meet your needs, at a price you'll love.



Do you have any information available for recommended installation clearances for this type of cable tray? Answer: The NEC does not have a specific installation clearance, but indicates in section 318-6 ...



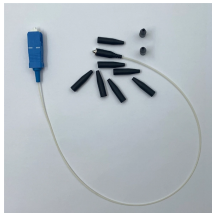
Choose from our selection of wire and cable, cords, wire rope and end fittings, and more. Same and Next Day Delivery.



Browse a diverse range of cables built to withstand everyday use. Find fast-charging, data-syncing, and versatile solutions for your home, office, and beyond.



Elevations must be determined for either the top or bottom of the tray run. An elevation benchmark (preferably set by the general contractor) can be transferred via laser level or transit to convenient ...



Clearances for access above and to side of cable trays. Vertical elevation of cable trays above the floor or bottom of ceiling structure. Field quality-control reports. Operation and Maintenance Data: For ...



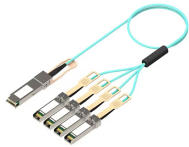
Fiber internet availability is improving, but cable internet continues to remain a staple for households nationwide. Here are CNET's picks for the top cable internet providers.



Compare the speeds and prices of cable internet providers in your area. Find the best deal for you and get connected today!



Looking for the best Cable TV, Internet, or Streaming TV service? CableTV helps you compare providers, plans & deals in your zip.



Compare cable TV and internet providers in your area. See plans, pricing, and bundles for every provider at your address. Find the best deals across 50 states.



Top of Cable Tray The elevations refer to the top of the cable tray. The cable tray will extend below these elevations. Bottom of Cable Tray The elevations refer to the bottom of the cable tray. The ...

## Contact Us

For more information, pricing, or custom solutions, please contact us:

Website: <https://www.indzawo.co.za>

Email: [sales@indzawo.co.za](mailto:sales@indzawo.co.za)

Phone: +27 71 296 8473

Address: 22 Quantum Street, Midrand, 1685, Gauteng, South Africa

This document is for informational purposes only. Specifications subject to change without notice.

