

Is the 25G optical module 10G or 1G



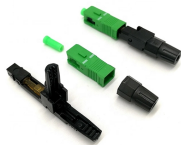
Is the 25G optical module 10G or 1G



Use 1G/10G where endpoints demand it or to keep operating costs low. For new server fabric builds, favor 25G and 100G for best cost-per-bit and easier migration.



In most cases, 1G links correspond to SFP modules, 10G links typically use SFP+ transceivers, and 25G links usually require SFP28 transceivers. For higher bandwidth uplinks or ...



A: It depends on the specific module and equipment. Some 25G SFP modules are designed to be backward compatible with 10G ports, but this is not universally true.



This optical module speed guide unpacks the differences between 1G, 10G, 25G, 40G, 100G, and 400G modules, offering technical insight, deployment scenarios, and selection criteria ...



When considering a network upgrade or expansion, understanding the differences between 10G SFP, SFP+, SFP28, and 25G SFP modules is essential. In this guide, we'll break down ...



Q13: Is the 25G Port Compatible with 10G Modules? A: Generally speaking, 25G ports are compatible with optical modules with 1G, 10G, and 25G rates and support multiple-rate switching.



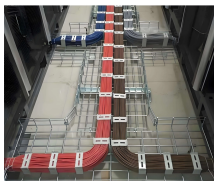
SFP28 ports are 25G speed ports and similar in size to a 10G SFP+ or 1G SFP port. They have supporting circuitry to enable 25G speed transceiver, DAC, and AOC components.



This guide breaks down the SFP data rate hierarchy (1G vs. 10G vs. 25G) in a clear, engineering-focused way. It also explains how to identify module speeds, avoid compatibility issues, ...



Arista's Optical Modules and Cable portfolio offer a wide variety of high-density and low-power 800G (dual 400G), 400G, 200G, 100G, 50G, 40G, 25G, 10G, 1G, and 100M Ethernet connectivity options ...



Compare SFP28 25G SR and 10/25G dual-rate modules in speed, compatibility, and use cases to choose the right fit for your evolving network needs.

Contact Us

For more information, pricing, or custom solutions, please contact us:

Website: <https://www.indzawo.co.za>

Email: sales@indzawo.co.za

Phone: +27 71 296 8473

Address: 22 Quantum Street, Midrand, 1685, Gauteng, South Africa

This document is for informational purposes only. Specifications subject to change without notice.

