

## Is it okay to put the fiber optic box in a cabinet



### Overview

Yes, a cable box can be in a cabinet. It keeps the wires organized on the back of the box and prevents any dust, dirt, or other debris from getting inside. Depending on the size of the cable box, it may require some modifications to make. Before beginning installation of fiber optic cables and hardware in a premises installation, the site must be properly prepared for the installation of fiber optic cables, hardware and transmission equipment. A typical PON topology (GPON, XGS-PON, or 25G PON) flows OLT → fiber distribution hub → passive splitters → distribution/drop fibers → premises. Running fiber internally involves extending this high-speed link from the service entry point to a centralized location, such as a dedicated media closet or.

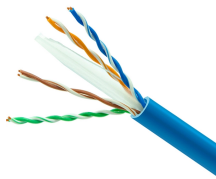
## Is it okay to put the fiber optic box in a cabinet



Learn the key differences between indoor and outdoor ONT installations. Discover expert tips to choose the right placement for reliable, hassle-free fiber internet.



Learn everything about fiber termination boxes—types, installation steps, and maintenance tips to ensure reliable fiber optic network performance.



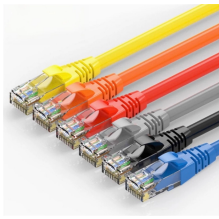
Whether you need a compact indoor splice box or a large-scale outdoor fiber distribution hub, we deliver solutions engineered for durability, security, and long-term network performance. This all-metal pole ...



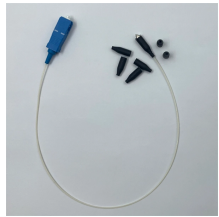
Yes, you can put a receiver in a cabinet. However, it is important to make sure that the cabinet is well ventilated, as a receiver requires adequate airflow to function properly and not overheat.



Although most fiber optic cables are not conductive, any metallic hardware used in fiber optic cabling systems (such as wall-mounted termination boxes, racks, and patch panels) must be grounded.



- Cannot occupy a cabinet, outlet box, panel, or similar enclosure housing the electrical terminations of an electric light, power, or Class 1 circuit — unless the nonconductive optical fiber ...



In network cabling, outdoor connections generally use fiber optic cables. When these optical fibers are installed or laid out, a Fiber Termination Box, or FTB, is used to distribute and ...



Learn how rack-mount optical fiber terminal boxes in MDU risers and data closets, and desktop/wall-mount FTBs in apartments or offices, provide mechanical protection, optical budget ...



Install support structures for fiber optic cable installations before the installation of the fiber optic cable itself. These structures should follow the guidelines of TIA/EIA 569-A and NECA/BICSI 568-2001.



Complete guide to safely running internal fiber optic cable. Learn the methods for a high-performance, future-proof home network.

## Contact Us

For more information, pricing, or custom solutions, please contact us:

Website: <https://www.indzawo.co.za>

Email: [sales@indzawo.co.za](mailto:sales@indzawo.co.za)

Phone: +27 71 296 8473

Address: 22 Quantum Street, Midrand, 1685, Gauteng, South Africa

This document is for informational purposes only. Specifications subject to change without notice.

