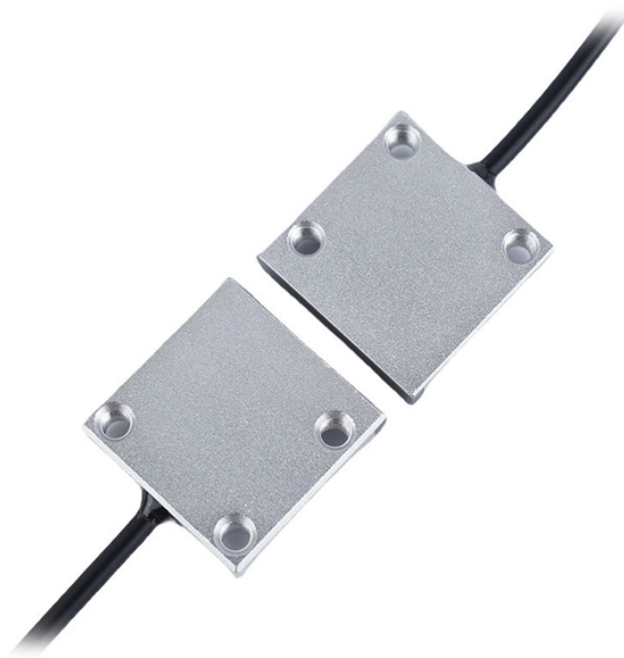


Is cold splicing of optical fiber stable



Overview

Unlike fusion splicing, which uses heat to join two optical fibers together, cold connection uses mechanical means to create a stable and low-loss connection. This allows both fibre ends to become soft enough to merge into a single fibre-optic path. After cooling, the Splice is reinforced with a heat-shrink sleeve to restore the fibre's. Common splicing methods include optical fiber cold splicing and optical cable hot fusion splicing. Connectors: Attaching removable connectors for quick and flexible connections. It is. This is where fiber optic cable splicing—the process of creating a permanent, high-performance join between two fiber ends—becomes critical. For network managers and technicians, a poor splice can lead to significant signal degradation, network downtime, and costly troubleshooting. Splicing is typically required during cable installation, maintenance, or network expansion.

Is cold splicing of optical fiber stable



Understanding the difference between splicing and connectors is essential for designing an efficient and reliable fiber optic network. While splicing offers unmatched performance and ...



The quality of a fibre-optic network is determined by the quality of its terminations, and fusion splicing offers the lowest loss and best stability, making it the preferred installation technique ...



One of the possibilities is mechanical splicing. Here, one uses a simple kind of alignment device which holds the fiber ends together such that the two fiber cores ...



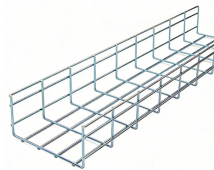
In this blog, we'll explore the main types of fiber optic splicing techniques, their advantages, limitations, and how to decide which method best suits your project.



Confused about fiber optic pigtailed—which connector type, which polish, fusion or mechanical splice? Our guide covers LC vs SC, APC vs UPC, splicing methods, and real-world use ...



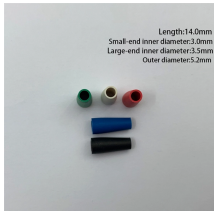
Fiber optic cold connection, also known as mechanical splicing, is a widely used method of connecting optical fibers in a network. Unlike fusion splicing, which uses heat to join two optical fibers ...



Fiber optic splicing is the process of joining two optical fibers end-to-end. Unlike using connectors, which are designed for frequent connection and disconnection at patch panels, splicing ...



One of the possibilities is mechanical splicing. Here, one uses a simple kind of alignment device which holds the fiber ends together such that the two fiber cores are well aligned to each other and there is ...



A reliable fiber-optic network depends on more than selecting the right cable and connectors; it hinges on the quality of every splice. Whether you are building a new backbone, ...



Fiber cold splicing refers to using special tools to mechanically connect two optical fibers. Its advantages include: Simple operation and easy to master; No electricity required; Materials that will not damage ...



Long-term Stability: While excellent for emergency and temporary fixes, mechanical splices might be less stable over very long periods or in harsh environments compared to fusion ...

Contact Us

For more information, pricing, or custom solutions, please contact us:

Website: <https://www.indzawo.co.za>

Email: sales@indzawo.co.za

Phone: +27 71 296 8473

Address: 22 Quantum Street, Midrand, 1685, Gauteng, South Africa

This document is for informational purposes only. Specifications subject to change without notice.

