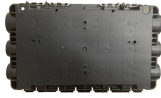


Iron-body electrical distribution box



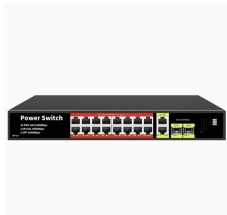
Iron-body electrical distribution box



Among the various types of distribution boxes, metal distribution boxes stand out due to their durability, fire resistance, and grounding capabilities. This article explores their benefits, selection criteria, ...



V12 series single phase assembly box has been designed for safe, reliable distribution and control of electrical power as service entrance equipment in residential, commercial and light industrial premises.



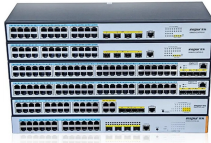
V12 series single phase assembly box has been designed for safe, reliable ...



Choose from our selection of metal electrical boxes, including outlet boxes and covers, weatherproof outlet boxes and covers, and more. Same and Next Day Delivery.



FD Device Box, 1-Gang, Malleable Iron Ridge Top, Cast Box, Hub Size: 3/4", Box Depth: 2.69" Includes: Internal Ground Screw. For Use with Threaded Rigid Metal Conduit.



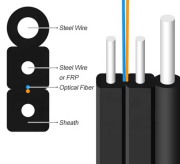
Material Advantages: Made of cold-rolled steel, possessing high hardness and strength, effectively protecting internal precision electrical components. Impact Resistance: Able to withstand external ...



Shop Iron Box for UL-listed power cables, custom solutions, and fast, reliable shipping—supporting projects from home setups to large-scale operations.



VIOX distribution boxes are constructed with high-grade materials resistant to corrosion and environmental stress. This ensures long-lasting performance even in challenging outdoor conditions, ...



What's the difference between a distribution box and a sub-panel? A distribution box typically refers to the main electrical panel that receives power from the utility service. A sub-panel is ...



The cable connectors in the distribution cabinet are insulated with high-grade imported rubber, providing tight encapsulation with no exposed live parts. Designed for outdoor maintenance-free operation, the ...



ABB provides the highest-quality, most versatile, innovative and comprehensive line of metallic, non-metallic, indoor, outdoor, weatherproof, and floor boxes from the Steel City®, Red Dot®, Carlon® ...

Contact Us

For more information, pricing, or custom solutions, please contact us:

Website: <https://www.indzawo.co.za>

Email: sales@indzawo.co.za

Phone: +27 71 296 8473

Address: 22 Quantum Street, Midrand, 1685, Gauteng, South Africa

This document is for informational purposes only. Specifications subject to change without notice.

