

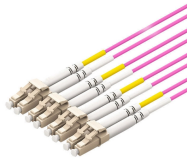
Introduction to Power Distribution Cabinets in Communication Equipment Rooms



Introduction to Power Distribution Cabinets in Communication Equipment



Explore power distribution cabinets! This comprehensive guide unveils secrets of PDUs, electrical centers, and power distribution in data centers.



Unlike standard power strips, PDUs are built to handle the demanding requirements of enterprise equipment, featuring robust construction, precise power management, and often sophisticated ...



This article explores how power is connected inside modern data center racks, examining the flow of electricity from facility power feeds to rack PDUs and ultimately to IT equipment.



Simply put, a distribution cabinet is an enclosure that contains circuit breakers, relays, busbars, and monitoring devices. It ensures that electricity is delivered safely and efficiently to ...



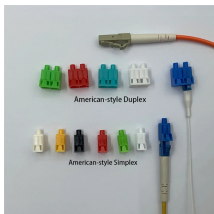
Include construction details, material descriptions, dimensions of individual components and profiles, and finishes for equipment racks and cabinets. Include rated capacities, operating characteristics, ...



This section includes the specifications for constructing and building out of Telecommunications Equipment Rooms (MDF/IDFs) to be used for supporting telecommunications ...



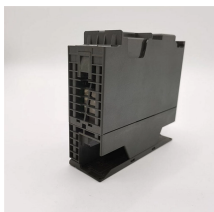
To minimize possible differences in potential in the grounding systems for power circuits supplying IT equipment, it is common for these centers to be equipped ...



The telecommunications space is an enclosed architectural space for housing communications cabling, cable terminations, and cross-connect hardware and telecommunications electronics. This section ...



Power Distribution Equipment is a term generally used to describe any apparatus used for the generation, transmission, distribution, or control of electrical energy.



To minimize possible differences in potential in the grounding systems for power circuits supplying IT equipment, it's common for these centers to be equipped with single or multiple power ...



This equipment is used to distribute power to the downstream loads and to protect the power distribution system in the data center. Each device is optimized for long life and ease of maintenance.

Contact Us

For more information, pricing, or custom solutions, please contact us:

Website: <https://www.indzawo.co.za>

Email: sales@indzawo.co.za

Phone: +27 71 296 8473

Address: 22 Quantum Street, Midrand, 1685, Gauteng, South Africa

This document is for informational purposes only. Specifications subject to change without notice.

