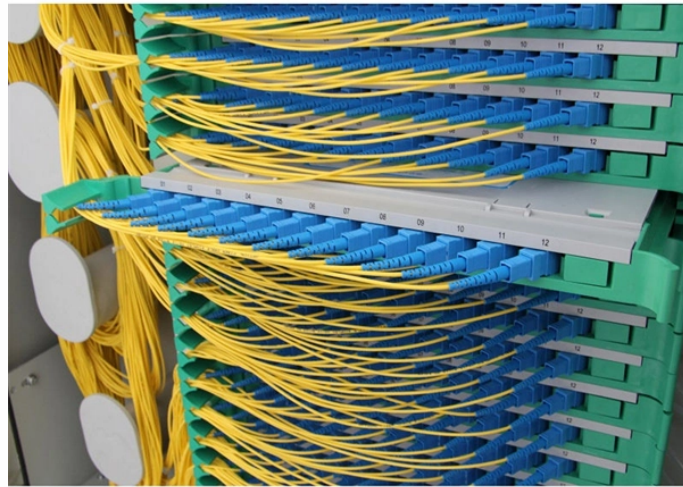


Installation of power distribution boxes for high-voltage and low-voltage equipment



Installation of power distribution boxes for high-voltage and low-voltage



This guide provides a complete breakdown of the standardized process for high and low voltage switchgear installation. We'll detail every key step, from initial preparation to final checks.



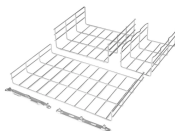
Learn how to install a distribution box safely and correctly. Covers wiring, placement, standards, and expert tips for a compliant setup.



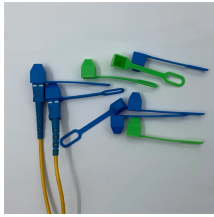
- For transformers requiring protection levels, the openings on the high-voltage or low-voltage and other insulation covers should comply with the transformer's protection level ...



This section contains the requirements for equipment and installation (including manholes, switch vaults and pull boxes) relating to the Sub-transmission, Distribution, and Control of electric power ranging ...



In high-low voltage mixed installation scenarios (e.g., industrial control cabinets, building power distribution systems), arranging high-voltage lines ($\geq 380V$) and low-voltage lines ($\leq 24V$) in the ...



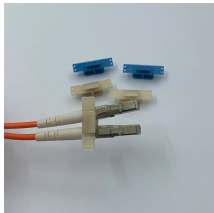
Each has its own unique standards and application guidelines, and one facet of good power system design is the knowledge of when to apply each type of equipment and the limitations of each type of ...



Explosion-proof distribution boxes, vital terminal distribution equipment in power systems, play a crucial role in controlling and protecting industrial electricity in hazardous environments. Given ...



This handbook is dedicated to electricians and future electricians, and explains the contents of high and low voltage switchboards.



Electro Centers or Integrated Power Assemblies (IPA) can be fitted out with a variety of electrical distribution equipment and shipped to the site in preassembled modules for mounting on elevated ...



The installation of complete sets of distribution cabinets, control cabinets (tables, boxes), and distribution boxes (panels) shall comply with the following regulations:

Contact Us

For more information, pricing, or custom solutions, please contact us:

Website: <https://www.indzawo.co.za>

Email: sales@indzawo.co.za

Phone: +27 71 296 8473

Address: 22 Quantum Street, Midrand, 1685, Gauteng, South Africa

This document is for informational purposes only. Specifications subject to change without notice.

