

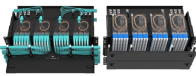
# **Installation of power distribution box in elevator machine room**



## Installation of power distribution box in elevator machine room



We typically install a panel in the elevator machine room when there are multiple elevators. In NYC there needs to be a disconnecting means reachable right inside of the door so we ...



The installation of all electrical wiring in hoistways and machine rooms, except as may be provided elsewhere in these regulations, shall comply with CCR, Title 24, Part 3, Article 620.



(2) Where the elevator machine and control equipment are not located at the top of the hoistway, a separate machine room shall be provided and only machinery and equipment required for the ...



Electrical wiring, raceways, and cables associated with elevators and dumbwaiters are allowed in hoistways, machine rooms, and control spaces for various functions, including signaling, ...



This document provides a wiring diagram for an elevator system. It shows the connections between various electrical components like the main power supply, speed governor, brake system, ...



The purpose of this T/C is to clarify wiring that is permitted to be located in an elevator hoistway, machine/control room, or control space/room. The primary purpose of limiting wiring in ...



Explanation-The 240VAC feed should have a black, red, white, and ground wire to the machine room. All electrical contractors will have full knowledge of this requirement. Simply insure they are aware of ...



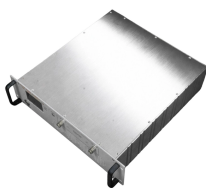
AF-SG27S Elevator High-Strength Sliding Guide Shoe For 9/10/16 mm Guide Rail



NEC 620.37 covers wiring in hoistways, machine rooms, control rooms, machinery spaces, and control spaces related to the elevator. In the OESC, this section was ...



- Must immediately confirm the type of three-phase power to the elevator equipment room (208 volt, 460 volt, 480 volt, 575 volt or 600 volt) and provide before work can begin.



NEC 620.37 covers wiring in hoistways, machine rooms, control rooms, machinery spaces, and control spaces related to the elevator. In the OESC, this section was amended to address conduits and ...

## Contact Us

For more information, pricing, or custom solutions, please contact us:

Website: <https://www.indzawo.co.za>

Email: [sales@indzawo.co.za](mailto:sales@indzawo.co.za)

Phone: +27 71 296 8473

Address: 22 Quantum Street, Midrand, 1685, Gauteng, South Africa

This document is for informational purposes only. Specifications subject to change without notice.

