

## Installation of electrical distribution box in cleanroom



### Overview

This guide summarizes key technical requirements for distribution cabinet wiring, cable installation, and conduit installation in controlled environments. Electrical components, from controlled lighting to air filtration, power distribution, and monitoring systems, must be installed and maintained. The cleanroom ceiling grid (shown above) is completely filled with HEPA-filtered fan units, lights, and ceiling tiles. A construction team installing or retrofitting this room - whether the room is stick-built or modular - will face major challenges. For engineers in GMP and ISO-regulated sectors, this infrastructure is a critical component of a facility's contamination-control strategy. The continuous positive pressure created by this laminar air-flow helps to control particles generated inside the enclosure by forcing them out the air vents.

## Installation of electrical distribution box in cleanroom



This guide explains what makes clean room electrical installations different, what standards apply, and what to look for when choosing a contractor for pharmaceutical electrical or ...



Distribution cabinet wiring is a critical component of biopharmaceutical cleanroom electrical systems and must comply with IEC 60439-1 "Low-voltage switchgear and controlgear ...



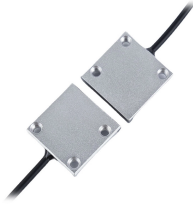
Terra's Power Distribution Modules (PDMs) are specifically designed to simplify electrical connections, reduce headaches, and get cleanroom projects completed faster.



The core benefits of a Cleanroom Power Control & Distribution System include scalability, ease of construction, and faster validation of the cleanroom ...



Customers must provide permanent electrical connection from supply panel to Power Distribution Modules (one 35A power line per PDM) in conformance with local electrical code, as well as any ...



Master cleanroom electrical design for 2026. Learn about GMP compliance, N+1 redundancy, and IP65 protection for high-spec pharmaceutical facilities.



In the clean room panel installation process, will involve two categories of problems, the first is the clean room wall panel opening problem, including clean switch socket, safety exit indicator ...



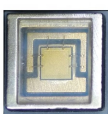
A comprehensive list of equipment going into the cleanroom along with electrical voltage and current requirements for each piece of equipment is critical to a good cleanroom electrical design.



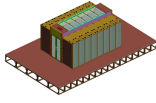
The core benefits of a Cleanroom Power Control & Distribution System include scalability, ease of construction, and faster validation of the cleanroom environment while also meeting fire and safety ...



This article explores the importance of correct electrical system installation in cleanrooms, common challenges, and best practices for maintaining a reliable and compliant setup.



Ensure your biopharmaceutical cleanroom meets GMP and IEC standards with expert electrical installations. Contact Guangzhou Cleanroom Construction Co., Ltd. for compliance and reliability.



Master cleanroom electrical design for 2026. Learn about GMP compliance, N+1 redundancy, and IP65 protection for high-spec pharmaceutical facilities.

## Contact Us

For more information, pricing, or custom solutions, please contact us:

Website: <https://www.indzawo.co.za>

Email: [sales@indzawo.co.za](mailto:sales@indzawo.co.za)

Phone: +27 71 296 8473

Address: 22 Quantum Street, Midrand, 1685, Gauteng, South Africa

This document is for informational purposes only. Specifications subject to change without notice.

