

Installation of Duplex Fiber Optic Connectors



Overview

This article explains what Duplex LC connectors are, how they work, the difference between single-mode and multimode use, how to choose and maintain them, and why they remain central to fiber network design. LC stands for Lucent Connector, named after the company that first developed it. Form. The FullAXS LC Duplex Field Installation Kit is a robust, IP65-rated connector kit built for FTTH, remote radio units, and other industrial applications. Designed for outdoor fiber connections, the kit features a rugged housing that withstands dust, water, and UV exposure. A link's transmit signal (Tx) must match its corresponding receiver (Rx) at the other end. While fiber optics enable speeds and distances copper can't match, the system's performance hinges. Panduit's Duplex LC Uniboot Push-Pull connector gives you the option to change polarity with ease, it also has no loose pieces that could be dropped or lost when changing polarity. 0mm 2-fiber round unitary cable.

Installation of Duplex Fiber Optic Connectors



For its small size and firm performance, it has become widely used in telecommunications and data center applications. This article will discuss what you need to know ...



This document provides installation procedures for Pre-Radiused LC Fiber Optic Connectors using both Epoxy and EZ methods, applicable for multimode and singlemode connections.



Get expert tips on fiber connector installation. Learn tools, techniques, and best practices for high-performance, error-free networks.



The FullAXS LC Duplex Field Installation Kit is a robust, IP65-rated connector kit built for FTTA, remote radio units, and other industrial applications. Designed for outdoor fiber connections, ...



Although it may seem obvious, fiber optic polarity is a frequent source of confusion and installation errors. Let's break down the essential basics for duplex applications.



Panduit's Duplex LC Uniboot Push-Pull connector gives you the option to change polarity with ease, it also has no loose pieces that could be dropped or lost when changing polarity.



Learn everything about Duplex LC connectors: design, UPC vs APC, single-mode vs multimode, polarity, plenum vs riser jackets, and installation tips.



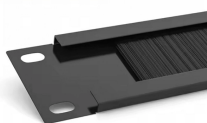
Unlock the world of fiber optic networking with our comprehensive guide on SC Duplex connectors. Discover connector types, adapters, and optimal performance for your fiber cables!



From single mode to multimode fiber, we handle everything from installation and testing to certification and termination (ST - SC - LC - MTRJ connectors).



This document provides installation procedures for Pre-Radiused LC Fiber Optic Connectors using both Epoxy and EZ methods, applicable for multimode and singlemode connections.



Rest your hands on the table or against each other and carefully thread the connector straight onto the fiber. Slowly rotate the ferrule between thumb and forefinger in order to ease the funneling of the fiber ...

Contact Us

For more information, pricing, or custom solutions, please contact us:

Website: <https://www.indzawo.co.za>

Email: sales@indzawo.co.za

Phone: +27 71 296 8473

Address: 22 Quantum Street, Midrand, 1685, Gauteng, South Africa

This document is for informational purposes only. Specifications subject to change without notice.

