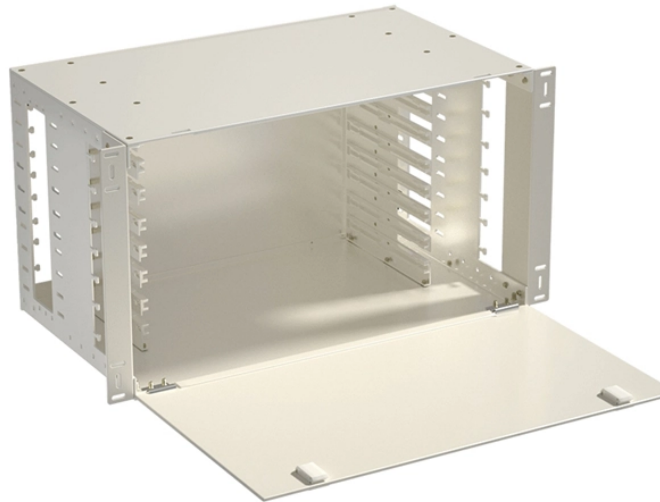


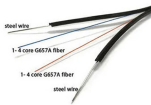
Installation diagram of outdoor feeder cable tray



Installation diagram of outdoor feeder cable tray



This method statement describes a detailed procedure for properly installing cable trays and conduits for the Feeder System.



These documents: ANSI/NEMA VE-1, Metal Cable Tray Systems; NEMA VE-2, Cable Tray Installation Guidelines; and NEMA FG-1, Non Metallic Cable Tray Systems, are an excellent industry resource in ...



Download a comprehensive set of Cable Tray Installation CAD Blocks in DWG format, ideal for electrical engineers, MEP designers, and industrial layout planners.



The Greenlee Ultra Cable Feeder is intended to pull cable off of reels to allow feeding the cable into conduit or cable tray. The Ultra Cable Feeder is not intended to pull cable or rope through conduit. ...



This document provides a project quality plan and method statement for installing a cable tray/conduit feeder system.



El término “herramienta eléctrica” en las advertencias hace referencia a su herramienta conectada a la red eléctrica (con cable) o herramienta eléctrica a pilas (inalámbrica).



Cable tray is considered to be a system. It must provide continuous support for cables, and the electrical continuity of the cable tray system must be maintained.



To ensure that the complete ladder tray wiring system performs as designed, it is important that it is properly installed. Personal injury as well as property damage will result if proper installation and ...



This Installation guide covers the most popular and standard installation questions that may come up. If you have any further questions, please contact our sales team at 888-4WB TRAY for assistance.



Once the bus enclosure and other associated components have been installed, the system is ready for cable installation.



This publication is intended as a practical guide for the proper and safe* installation of cable ladder systems, cable tray systems, channel support systems and associated supports.

Contact Us

For more information, pricing, or custom solutions, please contact us:

Website: <https://www.indzawo.co.za>

Email: sales@indzawo.co.za

Phone: +27 71 296 8473

Address: 22 Quantum Street, Midrand, 1685, Gauteng, South Africa

This document is for informational purposes only. Specifications subject to change without notice.

