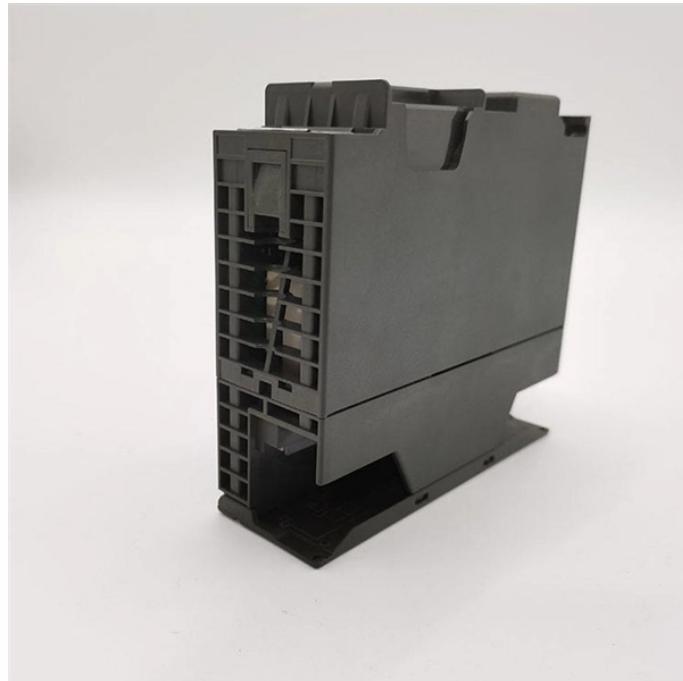


Installation Instructions for Vertical Cavity Surface Emitting Laser QSFP-DD



Overview

Page 2 Preface Audience: This installation note provides instructions for installing FS Quad Small Form-factor Pluggable 28 (QSFP28) and Small Form-factor Pluggable Double Density (SFP-DD) transceiver modules. These modules are hot-swappable input/output (I/O) devices that plug into 100GBASE. DS4000/DS4001 provides 32 QSFP-DD ports. The procedure for installing the QSFP-DD transceiver is shown below: Step 2: Insert the QSFP-DD transceiver to the guide rail inside the QSFP-DD port. QSFP modules contain Class 1M lasers. Invisible laser radiation can occur when laser connections are unplugged. 800 Gigabit (800G) transceivers are optical modules capable of handling data rates of 800 Gbps. With a transmission rate of up. This guide describes the general handling measures and precautions when handling optical transceivers to ensure they can be handled with reduced risk for damage.

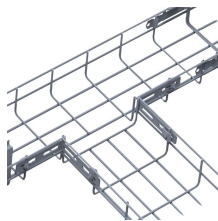
Installation Instructions for Vertical Cavity Surface Emitting Laser Q



Remove any rubber dust covers from the port where you are installing the QSFP module. Holding the QSFP module by its sides, insert the QSFP module into the port on the switch or module (see ...



This guide describes general handling measures and precautions when handling OSFP/QSFP-DD transceiver module to ensure that the risk of damage is reduced during processing



DS4000/DS4001 provides 32 QSFP-DD ports. The procedure for installing the QSFP-DD transceiver is shown below: Step 2: Insert the QSFP-DD transceiver to the guide rail inside the QSFP-DD port. Do ...



QSFP-DD cable assemblies are similar to QSFP28 4 channel (8 pair), but use double the channels to 8 (16 pair) by using a 2nd row of contact/pad locations on the front of the PCB



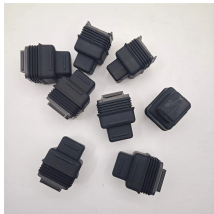
Vertical cavity surface emitting Lasers (VCSEL)—VCSEL is used for multimode optics such as SR8/ VR8. Directly modulated lasers (DMLs)—DMLs are used for single-mode optics such ...



Vertical-cavity surface-emitting lasers (VCSELs) have various advantages over other types of lasers. These include: These features make VCSELs better suited to a wide range of applications than ...



The following figure shows the QSFP-DD transceiver, but the procedures outlined in this document apply to all pluggable transceivers. The QSFP-DD transceiver is used primarily in switches, routers, and ...



In this example, we present how to build the VCSEL structure, simulate and analyse reflectivity, modes and frequencies. This example runs on Ansys Lumerical Multiphysics software (from 2025 R1.1 ...



In this example, we present how to build the VCSEL structure, simulate and analyse reflectivity, modes and frequencies. This example runs on Ansys Lumerical ...



Page 2 Preface Audience: This installation note provides instructions for installing FS Quad Small Form-factor Pluggable 28 (QSFP28) and Small Form-factor Pluggable Double Density (SFP-DD) ...



The COLORZ® II 400ZR+ QSFP-DD is a pluggable Digital Coherent Optics (DCO) transceiver. This DCO can be plugged into compatible switches and routers for coherent transmission of 400GbE ...

Contact Us

For more information, pricing, or custom solutions, please contact us:

Website: <https://www.indzawo.co.za>

Email: sales@indzawo.co.za

Phone: +27 71 296 8473

Address: 22 Quantum Street, Midrand, 1685, Gauteng, South Africa

This document is for informational purposes only. Specifications subject to change without notice.

