

Indoor distribution box trips and cannot be shut off

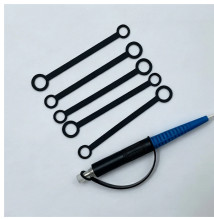
Motor protection controller



Indoor distribution box trips and cannot be shut off



I can move the switch to "on" and back to the middle, but I can't move to off. This breaker has two switches (it's a duplex) and only the bottom switch has this problem.



There are only two main places the issue can be: in a faulty (or misused) appliance, or in the circuit itself. After a few key checks, you can usually determine the problem, fix or replace it, and ...



I can move the switch to "on" and back to the middle, but I can't ...



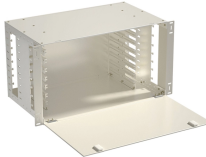
Calling an experienced and trustworthy electrician is the best way to handle breaker box problems. They can inspect your breaker box thoroughly and ...



Be sure that the power distribution box has sufficient power provided to it. Long cable runs can result in a voltage drop, which can be solved by using a heavy gauge wire.



Distribution boxes are the unsung heroes of our electrical systems, quietly managing power until something goes wrong. When they start tripping, overheating, or making strange noises, it's more ...



After disconnected all of your devices, turn on (or) reset the circuit breaker. If cannot detect the click sound or if the breaker trips again right away, it is certainly working with a ...



Calling an experienced and trustworthy electrician is the best way to handle breaker box problems. They can inspect your breaker box thoroughly and spot any issues such as faulty wiring, ...



Reset the Breaker: Move the tripped breaker to the “off” position first, then back to the “on” position. If it trips again immediately, there may be an underlying issue that requires professional ...



Discover 5 common causes of electrical trips and how to fix them, ensuring your home's safety and preventing future issues. We've all been there: you try to plug in the coffee maker or turn on a switch, ...



Identify the Source of the Problem: The first thing to do when a circuit breaker trips is to identify the source of the problem. Determine if the tripped breaker is associated with a particular circuit, room, ...



If your circuit breaker box keeps tripping, you're not alone—and you're definitely not wrong to be concerned. Frequent breaker trips are more than just an inconvenience; they can be a sign of ...

Contact Us

For more information, pricing, or custom solutions, please contact us:

Website: <https://www.indzawo.co.za>

Email: sales@indzawo.co.za

Phone: +27 71 296 8473

Address: 22 Quantum Street, Midrand, 1685, Gauteng, South Africa

This document is for informational purposes only. Specifications subject to change without notice.

