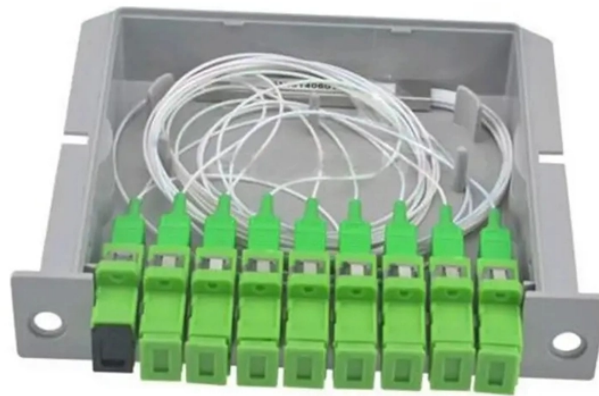
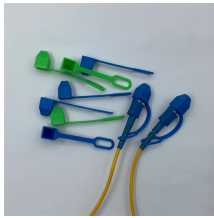


Identification of electrical distribution boxes in the production workshop



Identification of electrical distribution boxes in the production work



Low-voltage electricity is stepped down from medium-voltage electricity through medium-voltage distribution switchboards (MSB). They supply electricity to electrical devices in the ...



The distribution box isn't just metal and wires - it's the control center deciding which equipment gets power, how much, and when. Get its layout wrong, and you're building headaches into your ...



In this article, we will discuss 5 electrical distribution system mapping methods to improve your electrical documentation on design, settings, and operational configurations. This can ...



This information provides a foundation to understand electrical power distribution systems, the types of information that can be found on electrical drawings, and studies that are used to confirm proper ...



Design of Electrical Distribution Panel - Free download as PDF File (.pdf), Text File (.txt) or read online for free. This document outlines the design and functionality of electrical distribution panels, detailing ...



In industrial power distribution systems, cable distribution boxes (also known as power distributor boxes, distribution electrical boxes, or electrical power distribution boxes) are the core hub ...



Standardized color codes, formats, and terminology on labels improves clarity across the facility's electrical infrastructure. With every piece of ...



Power Distribution Equipment is a term generally used to describe any apparatus used for the generation, transmission, distribution, or control of electrical energy.



This ultimate guide explains what a distribution box does, its internal components, common types, real-world applications, and how to select the right DB Box for your project.



It is intended to provide easy identification of a component's location, power supply, and load information from the equipment label solely and to make it easy to trace equipment power sources and loads for ...



This standard describes requirements for numbering and labeling of real property electrical distribution equipment, circuits, and site lighting at Lawrence Livermore National Laboratory.

Contact Us

For more information, pricing, or custom solutions, please contact us:

Website: <https://www.indzawo.co.za>

Email: sales@indzawo.co.za

Phone: +27 71 296 8473

Address: 22 Quantum Street, Midrand, 1685, Gauteng, South Africa

This document is for informational purposes only. Specifications subject to change without notice.

