

Huijue switch disables PoE



Overview

If the Port power enabled field is displayed as disable, PoE is disabled on the interface. Run the poe enable command to enable PoE. This function is supported only by APs that support PoE OUT. system-view interface gigabitethernet 1/0/0 [HUAWEI-GigabitEthernet1/0/0]undo. Re-enables PoE operation on <port-list> and restores the priority setting in effect when PoE was disabled on <port-list>. If you configure a higher. Of course, if you don't use the PoE function of the PoE switch, you can also choose to turn it off. Some brands are ok, and some brands cannot be turned off directly.

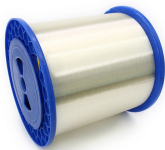
Huijue switch disables PoE



To enable the PoE function on an interface, run the `undo poe disable` command. The power-on and power-off of interfaces are determined by the PoE power and interface power priority.



To shorten the time during which PDs are powered off, configure fast power-on for PoE interfaces on the PoE switch. After the PoE switch is powered off and then restarts, PoE interfaces can rapidly resume ...



After enabling PD compatibility check on a PoE switch, you need to manually disable this function if you need to remove the switch from the current networking environment and deploy it in a new ...



This document describes all the configuration commands of the device, including the command function, syntax, parameters, views, default level, usage guidelines, examples, and related ...



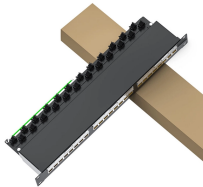
There are two main ways to close the POE function of the switch. The first method is to log in through the web page to directly close it, and the second method to log in to the switch ...



Introduced how to enable and disable PoE on Huawei S series switches, and learn more about Huawei S series switches.



The no form of the command disables PoE operation on <port-list>. Default: All PoE ports are initially enabled for PoE operation at Low priority. If you configure a higher priority, this priority is retained ...



If the Port power enabled field is displayed as disable, PoE is disabled on the interface. Run the poe enable command to enable PoE. If the power supply management mode on the AC is manual, run ...



Before using an AP to provide power for PDs connected to its interfaces, ensure that the PoE function is enabled on the interfaces. To enable the PoE function on an interface, run the undo ...

Contact Us

For more information, pricing, or custom solutions, please contact us:

Website: <https://www.indzawo.co.za>

Email: sales@indzawo.co.za

Phone: +27 71 296 8473

Address: 22 Quantum Street, Midrand, 1685, Gauteng, South Africa

This document is for informational purposes only. Specifications subject to change without notice.

