

# Huijue Switch Optical Port Link Aggregation



## Overview

In this video we will learn how to create LACP. In this video we will learn how to create LACP. IEEE 802.3ad link aggregation enables you to group Ethernet interfaces to form a single link layer interface, also known as a link aggregation group (LAG) or bundle. -----, more In this video we will learn how to create LACP. 8 Port 10Gb Smart Web Managed SFP+ Switch, 10G Optical Easy Managed SFP+ Ethernet Switch, Metal Fanless Home Lab Network Switch with Link Aggregation/QoS/VLAN/DHCP Client, Black, GT-SWTXG8FM We offer easy, convenient returns with at least one free return option: no shipping charges. All returns must. Switch stacking is a cornerstone of modern network design, enabling simplified management, improved redundancy, and scalable bandwidth. Huawei's stacking technology (e.



## Huijue Switch Optical Port Link Aggregation



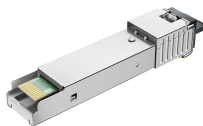
Mastering Huawei switch stacking requires meticulous planning, adherence to best practices, and proactive troubleshooting. By leveraging ring topologies, uniform firmware, and ...



As shown in Figure 1, configure an LACP mode link aggregation group on two Switch devices to improve the bandwidth and reliability between the two devices, with the following requirements: The two ...



In this video we will learn how to create LACP [Link-Aggregation Control Protocol] in Juniper switch and include physical ports in LACP in juniper also we will know how to create lacp in...



A link aggregation group preferentially uses the group-specific link-aggregation traffic redirection settings. If group-specific link-aggregation traffic redirection is not configured, the group uses the ...



Aggregating multiple links between physical interfaces creates a single logical point-to-point trunk link or a LAG. The LAG balances traffic across the member links within an aggregated Ethernet bundle and ...



Besides, this is a very small footprint switch that can be velcro mounted just about anywhere.  
□Versatile Applications□With 8 x 10G SFP+ port and multiple managed functions, this switch can be used in ...



Besides, this is a very small footprint switch that can be velcro mounted just about ...



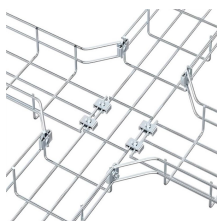
This section describes the hardware of the PEN passive aggregation module. The PEN passive aggregation module, also known as passive optical splitter or passive multiplexer, splits and ...



Adopting Huawei link aggregation switch tech transforms networks from fragile liabilities into competitive assets. For any team facing relentless growth, unpredictable traffic, or costly ...



PoE power overload protection Prevents instantaneous power from being too high and averts switch outage, effectively extending switch life



One CloudEngine S5736-S switch can connect to multiple aggregation switches through multiple links, significantly improving reliability of access devices.

## Contact Us

For more information, pricing, or custom solutions, please contact us:

Website: <https://www.indzawo.co.za>

Email: [sales@indzawo.co.za](mailto:sales@indzawo.co.za)

Phone: +27 71 296 8473

Address: 22 Quantum Street, Midrand, 1685, Gauteng, South Africa

This document is for informational purposes only. Specifications subject to change without notice.

