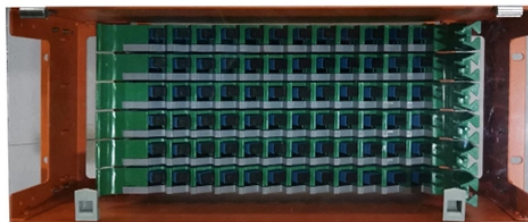


Huijue Core Switch Redundancy Backup



Overview

This document describes in detail the hot backup redundancy High Availability (HA) technology used in some Ruijie core switches, including technical features and solutions. Complex Programmable Logic Device. What method is there?

04-19-2024 02:04 PM 04-19-2024 04:47 AM You need first to use PO for all connection. 04-19-2024 05:51 AM. If you need layer 2 redundancy, you can use something like MLAG/vPC/whatever your vendor calls it to make your two logical links appear as one to the downstream device, and for layer 3 redundancy, you use a FHRP like HSRP or VRRP. What makes these backup systems the Achilles' heel of modern infrastructure?

The answer lies in outdated design philosophies. Hi, A school with around 800 users having one core switch 6509-E sup-720 (inter-vlan routing) collapsed core design connected to - 30 layer 3 HP switches with 10G and 1G backup links - 2 juniper WLCs 120 APs and VMware servers looking for a solution to achieve core redundancy.

Huijue Core Switch Redundancy Backup



In this tech paper, you will learn about the key protocols for building a redundant network and discover—based on five examples—how to design highly available three-tier or two-tier networks ...



In the core layer, I want to have redundancy, which means that if the main core switch of my network has a problem, the backup switch will automatically enter the circuit.



So when one of the "new core" switches goes down, anything connected to it will still be offline. You can design around this by having redundant connections to the different "cores" and letting STP handle ...



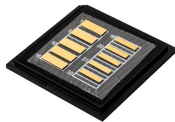
Clients: I have redundant "core" switches with single controllers, with 4 additional switches connected to each "core" switch. If I lose a "core" switch, then about half a floor would ...



The high reliability and redundancy design of Core Switches, including redundant power supplies, redundant interfaces, link aggregation, and hot-swap capabilities, ensures network ...



Another advantage of VSS or any similar stacking type technology is that each access switch can have active active 10G uplink back to the core. If you mix vendors, you would probably ...



This document describes in detail the hot backup redundancy High Availability (HA) technology used in some Ruijie core switches, including technical features and solutions.



I'm currently doing a network infrastructure upgrade... core switches, hypervisors and upgrade to 10G backbone between two main buildings. Site consists of two main buildings and a few ...



Does the core have 2 sups that would provide some level of redundancy once it had to power supplys with separate feeds that would just leave the chassis as only point of failure and they ...



When Tokyo's smart grid survived a 6.8 magnitude earthquake last month using Huijue's adaptive critical circuit protocols, it proved one thing: Resilience isn't about redundancy ratios.

Contact Us

For more information, pricing, or custom solutions, please contact us:

Website: <https://www.indzawo.co.za>

Email: sales@indzawo.co.za

Phone: +27 71 296 8473

Address: 22 Quantum Street, Midrand, 1685, Gauteng, South Africa

This document is for informational purposes only. Specifications subject to change without notice.

