

# **Huawei S5735 Optical Module**



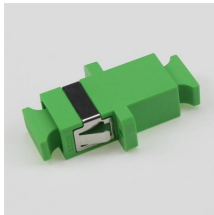
## Huawei S5735 Optical Module



Built on next-generation, high-performance hardware and software platform, CloudEngine S5735-L-V2 switches stand out with compelling features such as intelligent stack (iStack), flexible Ethernet ...



It provides enhanced Layer 3 features and IPv6 support. The document provides specifications for the S5735-S24ST4XE-V2 including its dimensions, weight, power consumption, and environmental ...



The switch is a PoE switch and supports three power module slots, each of which can have a 1000 W PoE or 600 W PoE power module installed. Pluggable AC and DC PoE power modules can be used ...



Huawei CloudEngine S5735-S-V2 series are standard gigabit Ethernet switches that provide GE electrical & 2.5GE optical downlink ports, 10GE uplink ports and one extended slot.



Overview -T ports, 4 x 10 GE SFP+ ports. Huawei CloudEngine S5735-S is a series of standard gigabit access switches that provide 24-48 flexible all-GE downlink ports and four fixed 10 GE uplink ports. ...



Based on the next-generation high-performance hardware and Huawei's Versatile Routing Platform (VRP), the CloudEngine S5735-S-V2 series hybrid optical-electrical switches support enhanced ...



The Huawei CloudEngine S5735-S-V2 series are all-optical gigabit Ethernet switches designed for high performance with features such as simplified operations, enhanced Layer 3 capabilities, and mature ...



Each combo port matches only one internal forwarding port. A combo port can be configured as an electrical port or an optical port, but only one port can be active at a time. When one port is active, ...



Introduction CloudEngine S5735-S-V2 series all-optical switches are developed based on next-generation high-performing hardware and software platform. CloudEngine S5735-S-V2 switches ...



Based on the next-generation high-performance hardware and Huawei's Versatile Routing Platform (VRP), the CloudEngine S5735-S-V2 series hybrid optical ...



Built on next-generation, high-performance hardware and with the Huawei Versatile Routing Platform (VRP), CloudEngine S5735-S switches boast advanced features, such as enhanced Layer 3 ...

## Contact Us

For more information, pricing, or custom solutions, please contact us:

Website: <https://www.indzawo.co.za>

Email: [sales@indzawo.co.za](mailto:sales@indzawo.co.za)

Phone: +27 71 296 8473

Address: 22 Quantum Street, Midrand, 1685, Gauteng, South Africa

This document is for informational purposes only. Specifications subject to change without notice.

