

Huawei Optical Module Single-Mode 1550

More products

OUTDOOR CABINET



FTTX SOLUTION



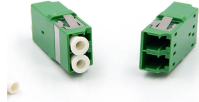
DATA CENTER



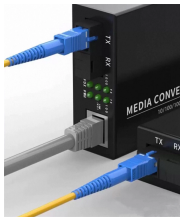
h optics.en.alibaba.com



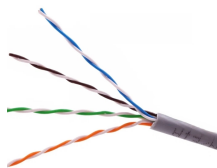
Huawei Optical Module Single-Mode 1550



You can use different levels of 1.25 Gbit/s SFP/eSFP optical modules with GE interfaces and 10 GE interfaces. The wavelength of common 1.25 Gbit/s SFP/eSFP optical modules can be 850 ...



Huawei SFP-10G-ZR 10GBase optical transceiver for single-mode fiber, 1550nm wavelength, 80km reach. Ideal for high-speed networking.



Single-mode optical modules are used with single-mode fibers. Single-mode fibers support a wide band and large transmission capacity, and are used for long-distance transmission.



The Huawei S-SFP-GE-LH40-SM1550 is a single-mode 1.25G SFP module with a wavelength of 1550nm and two LC connectors for connections up to a distance of 40km. The LC connectors in the ...



The Huawei eSFP-FE-LX-SM1550 Single-Fiber-Bidirectional Module is a high-performance, cost-effective solution designed for long-distance optical fiber ...



This module is designed for single mode fiber and operates at the wavelength of 1550 nm. The transmitter section uses a 1550nm EML, which is class 1 laser compliant according to International ...



High quality 02310CNF OSX040N01, Optical Module - SFP+-10G-Single Mode Module (1550nm, 40km, LC) from China, China's leading Huawei Optical Transceiver product, with strict quality control ...



High quality 40km SMF 1550nm Huawei SFP Module SFP-GE-LH40-SM-1550-BIDI 100Base Single-mode Module from China, China's leading product market huawei sfp transceiver product, with strict ...



The Huawei eSFP-FE-LX-SM1550 Single-Fiber-Bidirectional Module is a high-performance, cost-effective solution designed for long-distance optical fiber communication.



Huawei S-SFP-GE-LH40-SM1550 compatible optical transceiver is a dual fiber 1000Mbps Small Form-factor Pluggable SFP module for use in 1000BASE Ethernet network. SFP EX provides 1Gb/s ...



Huawei SFP-10G-ZR 10GBase optical transceiver for single-mode fiber, 1550nm ...



QSFPS has the Huawei Compatible transceiver module S-SFP-GE-LH40-SM1550 in stock and ready to ship. We can ship them out in 24 hours after we get your order.

Contact Us

For more information, pricing, or custom solutions, please contact us:

Website: <https://www.indzawo.co.za>

Email: sales@indzawo.co.za

Phone: +27 71 296 8473

Address: 22 Quantum Street, Midrand, 1685, Gauteng, South Africa

This document is for informational purposes only. Specifications subject to change without notice.

