

## Huawei Aggregation Switch 68 Ports



### Overview

They provide high-density 100GE and 400GE optical ports, and feature high performance, high reliability, cloud-based management, and intelligent O&M. Based on Huawei's industry-leading software and hardware platform, the switches are launched for security, Internet of Things. This document provides campus networks typical configuration examples and feature typical configuration examples. "Feature Typical Configuration Examples" provides. Aggregation and access devices downstream to the core layer can automatically go online through Zero Touch Provisioning (ZTP). Import information using the network plan template.

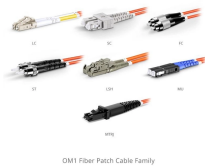
## Huawei Aggregation Switch 68 Ports



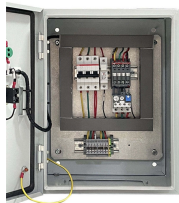
Forget incremental upgrades; this aggregation beast isn't just about adding ports. It's about systematically dismantling layers of unnecessary complexity choking your network's core.



Thunder link offers various models of Huawei Ethernet switches and network switches, including the S5720, S6720, S6730, CE6800 and CE12800, designed for data centers and campus networks.



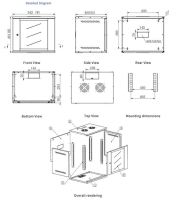
The Huawei aggregation switch supports vertical and horizontal scaling, letting businesses add ports, upgrade software, or stack units as needs evolve. A startup might deploy a ...



These make CloudEngine S6780-H series switches the ideal core or aggregation switches on a cloud campus network to facilitate digital transformation of global customers.



In this example, aggregation switches set up stacks that function as gateways for wired and wireless users on the entire network and are responsible for routing and forwarding of user services.



Thanks to its port density, latency, and VXLAN features, S6730-H is used in leaf-spine architectures, aggregating server racks and offering east-west traffic segmentation securely.



Ethernet link aggregation is a basic feature of a switch and is not under license control. For details about software mappings, visit Hardware Query Tool and search for the desired product model.



After the aggregation and access switches go online, create Eth-Trunks between the access and aggregation switches. Create uplink Eth-Trunk interfaces on the access switches for ...



Ethernet link aggregation increases link bandwidth by bundling multiple physical links to form a logical link. Link aggregation can work in manual mode or Link Aggregation Control Protocol (LACP) mode. ...



This chapter describes how to configure link aggregation. Link aggregation bundles multiple Ethernet links into a logical link to increase bandwidth, improve reliability, and load balance traffic.

## Contact Us

For more information, pricing, or custom solutions, please contact us:

Website: <https://www.indzawo.co.za>

Email: [sales@indzawo.co.za](mailto:sales@indzawo.co.za)

Phone: +27 71 296 8473

Address: 22 Quantum Street, Midrand, 1685, Gauteng, South Africa

This document is for informational purposes only. Specifications subject to change without notice.

