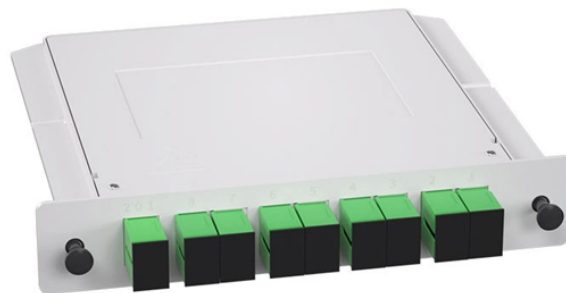


How to tell if a beam splitter is 1 1 or what ratio



Overview

The split ratio of light transmittance and reflectance is 1:1 and is called a half mirror. Good fit for large beam size applications at a reasonable price. A beamsplitter is an optic that splits light into 2 directions. a laser beam) into two (or sometimes more) beams, which may or may not have the same optical power (radiant flux). It is a crucial part of many optical experimental and measurement systems, such as interferometers, also finding widespread application in fibre optic telecommunications.



How to tell if a beam splitter is 1 1 or what ratio



Beamsplitters are optical components used to split incident light at a designated ratio into two separate beams. Additionally, beamsplitters can be used in reverse to combine two different beams into a ...



Winfrey chose it as her March 2025 book club pick. In "The Tell," Griffin recounts her experience of coming to terms with previously uncovered memories of alleged childhood abuse by a ...



A beam splitter as shown in Figure 1 will always lead to a transverse offset of the transmitted beam, which is proportional to the thickness of the substrate. There are so-called pellicle beam splitters with ...



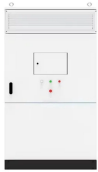
These beamsplitters are made from high grade glass materials with laser grade surface flatness and surface quality and have a tighter tolerance on the splitting ratio.



Half mirrors (beamsplitters that the reflected light and transmitted light are approximately 1:1) have a low absorption, and the split ratio of transmittance and reflectance can be set as needed ...



To tell is to describe or announce something, either by speaking or writing. If you're going to be late to a movie, you should tell your friends so they can save you a seat.



When incoming, unpolarized light reaches the beam splitter, it splits into two divergent paths. Some of the light reflects off the surface, while the rest passes through. This division of light is ...



We use tell with an indirect object and a to-infinitive to report a command or an instruction.



Customize your plan exactly as you wish and feel free to change it based on your monthly needs and budget. Bring your family to Tello! Build designated talk, text & data phone plans for each member. ...



Beamsplitters separate incident light into two or more beams of the same wavelength. These exiting beams are differentiated by either their optical power (non-polarizing) or polarization ...



To reduce loss of light due to absorption by the reflective coating, so-called "Swiss-cheese" beam-splitter mirrors have been used. Originally, these were sheets of highly polished metal perforated with ...



When comparing beam splitters, always check whether the specified R/T ratio is for unpolarized light or for a specific polarization. The numbers can differ significantly.



The split ratio of light transmittance and reflectance is 1:1 and is called a half mirror. The 2 forms of beamsplitters are cube and plate type. Good fit for large beam size applications at a reasonable ...



Definition of tell verb in Oxford Advanced Learner's Dictionary. Meaning, pronunciation, picture, example sentences, grammar, usage notes, synonyms and more.



A beam splitter is an optical device that splits beams (such as laser beams) into two (or more) beams. Beam splitters typically come in the form of a reflective device that can split beams into exactly ...



In this article, we will explain when to use “say” and “tell”, along with their correct usage, sentence structures, and common collocations. Understanding the difference between these two verbs will ...



The meaning of TELL is to relate in detail : narrate. How to use tell in a sentence. Synonym Discussion of Tell.

Contact Us

For more information, pricing, or custom solutions, please contact us:

Website: <https://www.indzawo.co.za>

Email: sales@indzawo.co.za

Phone: +27 71 296 8473

Address: 22 Quantum Street, Midrand, 1685, Gauteng, South Africa

This document is for informational purposes only. Specifications subject to change without notice.

