

How to secure a telecommunications tower on a rooftop



Overview

They can be secured by permanently installed fixed (tieback) anchors or with mobile (freestanding) anchors. Freestanding roof anchors are used on flat or low-slope roofs and feature connected counterweight bases with a central pedestal as the anchor point. Telecom tower safety standards are the most important guidelines in the telecommunications industry. They are designed to ensure the structural integrity of towers and the safety of all personnel. It is a. velopers such as End Users to deploy wireless facilities on top of or attached to alternative structures such as bu overturning entirely from the weight of its structural members, appurtenances, and mou ting pipes, and is supplemented by adding weight to the attached mounting trays with ballast. Data center roofs typically host environmental control. Whether you're installing a new small cell network to tackle capacity and density issues, or erecting freestanding cellular towers to support more antennas and bandwidth, there are important safety issues you have to take into account.

How to secure a telecommunications tower on a rooftop



Cell towers need to stand tall and operate ceaselessly. Structural integrity must be assured. Antennas and dishes must be tested and calibrated for signal strength. Weatherproofing ...



Cell towers are vital to modern communication, ensuring connectivity and public safety. However, they increasingly face threats from theft, vandalism, activism, and accidental damage.



Mounting telecommunications facilities on buildings presents unique challenges to all stakeholders in our industry. The purpose of this white paper is to raise awareness and improve ...



Quick roof penetration mounts are mounting systems designed to securely fasten antennas, satellite dishes, or HVAC components, to a roof by creating small, strategically placed penetrations.



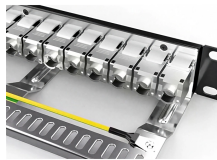
In this article, we discuss the different types of fall protection utilized in the telecom industry, and how to assess the hazards on your building's roof with a fall hazard survey.



An expert guide to telecom tower safety standards. Explore the critical rules for structural design, construction, maintenance, and RF exposure to ensure network safety.



Whether you're installing a new small cell network to tackle capacity and density issues, or erecting freestanding cellular towers to support more antennas and bandwidth, there are important safety ...



What to consider for lightning and surge protection of rooftop systems and which protection solutions from DEHN are suitable.



Antennas mounted on rooftop towers or masts often use only ballast to hold them in place, which quickly can become dislodged during strong winds. Anchoring using guy wires or bracing can improve the ...



During this workshop, industry stakeholders, along with employee safety advocates and the families of communication tower employees who had been killed on the job, gathered to discuss issues affecting ...

Contact Us

For more information, pricing, or custom solutions, please contact us:

Website: <https://www.indzawo.co.za>

Email: sales@indzawo.co.za

Phone: +27 71 296 8473

Address: 22 Quantum Street, Midrand, 1685, Gauteng, South Africa

This document is for informational purposes only. Specifications subject to change without notice.

