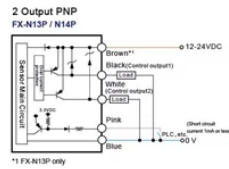
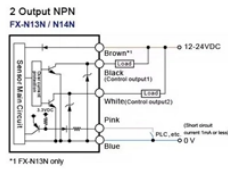


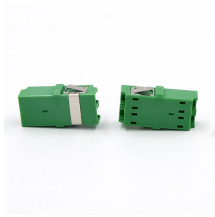
How to route cables at a 90-degree angle in cable trays



How to route cables at a 90-degree angle in cable trays



It is the quickest way to attach tray to support, utilizing a washer support and self threading screw. Corner Splice and Radius Corner Splice are used when tray sections are joined to make a 90 degree ...



Cable tray layout must take into consideration the design limits of the cable. To minimize damage and verify integrity after installation, follow the practices outlined in cable handling and testing procedures ...



Features Contains: One Kit contains hardware for one tee or two 90 degree bends. Slotted Design: fits any size tray and eliminates precise tray alignment. UL Classified Splice.



What Is a Cable Tray Offset? A cable tray offset is a planned change in the routing direction of a cable management system to bypass physical obstacles while maintaining the continuous flow of cables. In ...



This type of bend is typically used to route cables from overhead trays to ground-mounted equipment or when descending between floors. Typical Angles: Often between 30 and 90 degrees, ...



The document provides instructions for the installation of 90° short radius bends for wire mesh cable trays in various widths (4", 6", and 12"). It lists the required accessory (NL8530012) for each width of ...



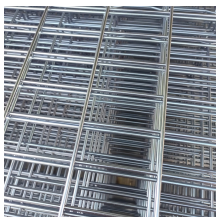
The assembly guide below will help the cable tray installer make the bends and others without difficulty even he had never installed wire mesh cable trays before.



Corner pieces RS90 are used to make a 90° angles for KR-type cable trays. Jointing of RS90 corners to cable trays is fast and easy, because corners have joint slats already at place.



Now you know that 160mm in 100mm cable tray will be 90°. So you can divide the 160mm by any number you want to get as many bends as you want. Eg. Divide $160\text{mm} / 8 = 20\text{mm}$...



Attach one bracket to each of the two 90° angles using two bracket clamps (see page C35) per angle. To form a horizontal cross without a radius, proceed in the same way as a tee, repeating the process on ...

Contact Us

For more information, pricing, or custom solutions, please contact us:

Website: <https://www.indzawo.co.za>

Email: sales@indzawo.co.za

Phone: +27 71 296 8473

Address: 22 Quantum Street, Midrand, 1685, Gauteng, South Africa

This document is for informational purposes only. Specifications subject to change without notice.

