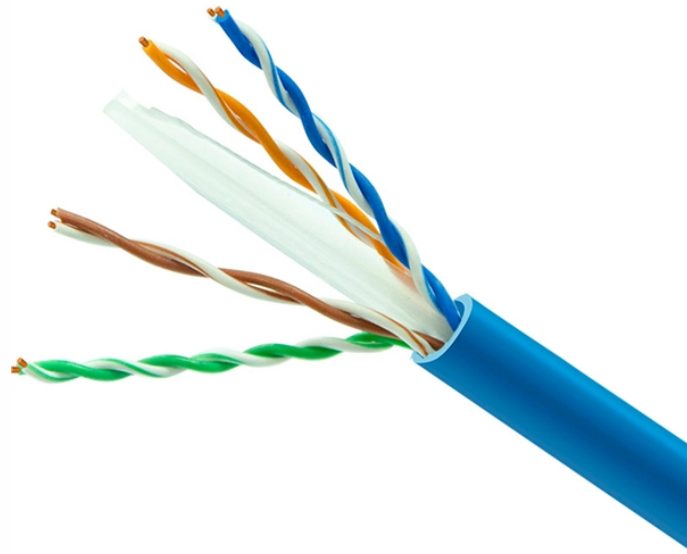


## How to properly grind cable trays



### Overview

For the best results, use a WB30BC Angular Blade Offset Bolt Cutter with 24" (600 mm) long handles. Cable tray may be used as the Equipment Grounding Conductor (EGC) in any installation where qualified persons will service the installed cable tray system. It involves connecting cable trays to the facility's grounding system, providing a low-impedance path for fault currents and protecting personnel. It is essential that the grounding of cable tray systems, including the cables in the tray systems, is inspected for compliance with the grounding requirements in the National Electrical Code (NEC) BEFORE the cabling in the tray is energized and BEFORE cable is installed. If cable is installed. This comprehensive guide investigates the most frequent wire management challenges faced in real-world setups and demonstrates how the correct cable tray accessories may address them. The method gives details of how the work will be carried out and what health and safety issues and controls that.

## How to properly grind cable trays



Follow cutting pattern and blade positioning. Placing Flextray open side down provides the optimum cutting angle.



This is true for cable tray, conduit, cable, or any electrical system. The grounding inspection should start with the installation and should continue until all tray sections are connected together, either by ...



Center hung tray supports allow for quicker and easier cable installation by allowing cables to be deposited into tray systems from each side. There is a maximum load capacity per hanger of 318 kg ...



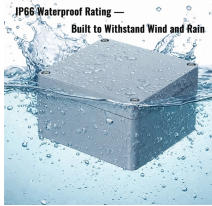
Subscribed 15 2.1K views 11 years ago Brent from Studon shows us how to properly grind Cable tray...more



This article explains the main requirements and good practices for cable tray systems, including tray types, materials, loading, supports, bonding, cable selection, and installation details.



This comprehensive guide delves into the complexities of cable tray grounding, offering in-depth insights into its importance, principles, design considerations, installation best practices, and ...



In addition to providing an electrical connection between the cable tray sections and the EGC, the grounding clamp mechanically anchors the EGC to the cable tray so that under fault current ...



The purpose of this article is to define the sequence and methodology for the installation of electrical cable trays, cable trunking, cable raceways and boxes, junction and pull boxes.



Bonding and grounding minimizes this hazard by giving the short/fault a path to ground, instead of it being the person touching the cable tray. That's the whole point. It will still hurt but it will ...



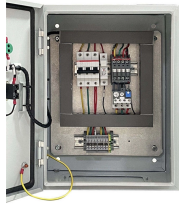
The document discusses grounding and bonding practices for metallic and non-metallic cable trays. Metallic cable trays must be grounded and can serve as an ...



The document outlines the procedure for installing cable trays, including essential tools, equipment, and safety measures. It emphasizes the importance of thorough ...



This comprehensive guide delves into the complexities of cable tray grounding, offering in-depth insights into its importance, principles, design ...



Discover common cable management problems and how cable tray accessories effectively solve them to ensure safety and performance.

## Contact Us

For more information, pricing, or custom solutions, please contact us:

Website: <https://www.indzawo.co.za>

Email: [sales@indzawo.co.za](mailto:sales@indzawo.co.za)

Phone: +27 71 296 8473

Address: 22 Quantum Street, Midrand, 1685, Gauteng, South Africa

This document is for informational purposes only. Specifications subject to change without notice.

