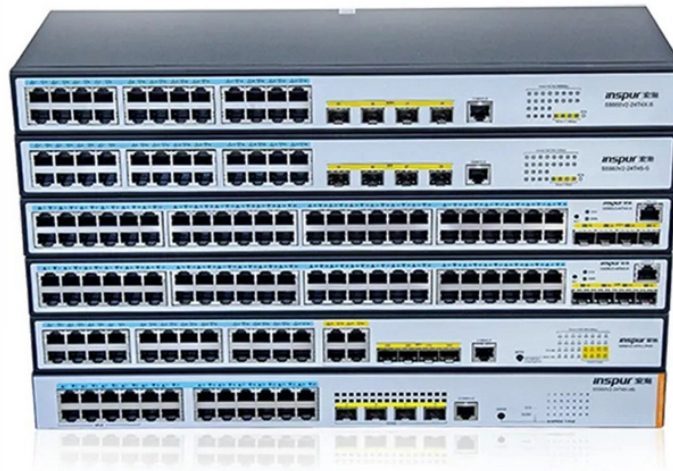


## How to place the on-site power distribution box



### Overview

Choose the right box based on environment (indoor/outdoor), load capacity, and durability. Check for proper IP/NEMA ratings and material quality. Learn how to install a distribution box safely and correctly. It takes the incoming power and safely distributes it to different circuits throughout your building. Power outages a problem?

Count on Power Temp Systems solutions, tailored to your needs, to keep your project on schedule and ensure your team has all the. A well-chosen and properly installed distribution box can prevent electrical hazards, reduce downtime, and ensure your electrical system operates smoothly for years to come. A distribution box, also known as a. In modern electrical systems, cable distribution boxes (also known as electrical distribution boxes or distribution boxes) play a crucial role as the key hub for managing, distributing, and protecting circuits.

## How to place the on-site power distribution box



Before starting the installation, finding a proper place for putting the distribution box is crucial, because it largely decides the safety and convenience of maintenance. Let's see what factors ...



Install distribution box systems with essential hand tools like screwdrivers and pliers, plus power tools such as drills and impact drivers for efficient setup.



The installation requirements and specifications of Distribution box involve many aspects, including site selection, fixing method, wiring specifications and safety protection.



In this video I show you how to wire a main electrical panel from start to finish. I show you how to wire a panel box neatly and very detailed to give a good looking wiring job.



Generally, utility boxes are sited in the direction of the pipe. Utility boxes that are parallel with the curb should be located in the edge zone or throughway zone where possible, or between existing or ...



The installation requirements and specifications of Distribution box involve many aspects, including site selection, fixing method, wiring specifications ...



(2) Various electrical appliances in the distribution box and switch box shall be fastened on the mounting plate according to the specified position without inclination and looseness.



Whether you're looking for additional product information or design assistance, or you're ready to get a personalized quote, our dedicated team is here to guide you every step of the way. This product is ...



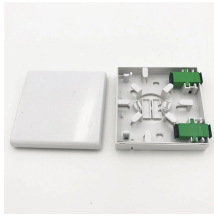
Once you decide on your layout start screwing your parts down to the inside of your box. After you finish mounting all of your boards and strips, you can start wiring.



Reliable cable distribution boxes ensure safe, efficient power management for residential, commercial, and industrial systems. Learn installation and safety tips.



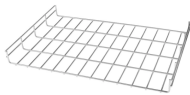
The wire inlets and outlets in the distribution box and switch box shall be set at the lower bottom of the box. It is strictly prohibited to set them at the top, side, back or door of the box.



A distribution box, also known as a distribution board, electrical panel, or breaker box, is an enclosure that houses electrical components responsible for distributing electricity throughout a ...



Setting Up LOpSter Trap™ Power Distribution Units (PDUs) Step 1: Locating LOpSter Traps™ LOpSter Traps™ are designed to be used in dry, indoor locations only Each LOpSter ...



From Modular Switch Boards to Quick Connect Docking Panels, we provide reliable power exactly where and when you need it, ensuring your construction projects are powered without interruption. ...



A distribution box is the heart of any electrical system. It takes the incoming power and safely distributes it to different circuits throughout your building. Whether in a home or an industrial ...

## Contact Us

For more information, pricing, or custom solutions, please contact us:

Website: <https://www.indzawo.co.za>

Email: [sales@indzawo.co.za](mailto:sales@indzawo.co.za)

Phone: +27 71 296 8473

Address: 22 Quantum Street, Midrand, 1685, Gauteng, South Africa

This document is for informational purposes only. Specifications subject to change without notice.

