

How to perform core switch mapping

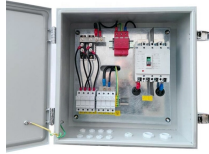


Overview

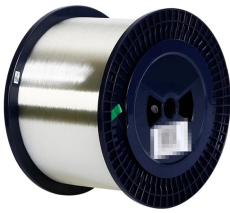
Whether you require a very high availability of the network or just continued availability with lower levels of resiliency, this guide discusses the options for the recommended designs proposed here, with a focus on the most critical environments because they are the most difficult to. Whether you require a very high availability of the network or just continued availability with lower levels of resiliency, this guide discusses the options for the recommended designs proposed here, with a focus on the most critical environments because they are the most difficult to. An effective SD-branch design should consolidate WAN and LAN capabilities to simplify remote office infrastructure and optimize operations without introducing new risks. The nature of a campus deployment is not just the large physical size of the network, but the greater complexity of who and what. With the Fortinet solution for integrated networking using FortiLink, the core layer always comprises a set of two to four FortiGate devices and two very high-speed FortiSwitch units, which support a large number of 100-GbE and/or 40-GbE ports with enough capacity to grow the links between them and. The basic requirements are to have a demonstration suite of servers/storage devices networked with internet access

with certain devices segmented in different VLANs. Also, a separate VLAN is required for training and meeting rooms which will receive DHCP addresses from a WIN2K3 server. The kit I've. I've unfortunately been tasked with determining which switchports connect to what- be it a connection to another switchport, or a link to a host. 60 (PC1) to R2 instead of following the default route to R1. · GitHub Simulated enterprise switch replacement lab with VLANs, ACLs, firmware upgrades, rollback planning, and network.

How to perform core switch mapping



In this guide, I will show how to implement basic Policy Based Routing on a Layer 3 Switch. Here is the topology we will work on: In this scenario, we have two routers connected to a ...



With the use of a core layer, each aggregation switch only needs 2x100-GbE links, and the core layer is the only place where you need large numbers of 100-GbE ports.



It is intended for administrators responsible for installing, configuring, and managing Aruba switches on a network. Updates to this document can occur after initial publication. For the latest versions of ...



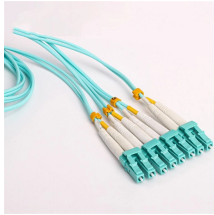
How would I use them as core switches? I was hoping someone could point me in the right direction on the best way to connect the switches up, i.e. network design, cabling (fibre uplinks ...



Unlike access switches, which connect directly to end-user devices, the core switch focuses on aggregating and routing traffic between other switches, minimizing latency and ...



Network topology is a powerful tool to provide administrators a graphic overview of the logical network topology and the status of any devices. In combined networks, topology shows an integrated Cisco ...



This lab simulates a real-world enterprise network upgrade involving the replacement and configuration of core switches, port migration, ACL deployment, and rollback planning.



Basically determine what each port is connected to, for the entire core and distribution layer of this network topology. To do this, I've gathered the following from each switch: local switchport info, mac ...



In this paper, we investigate the core-switch mapping (CSM) problem that optimally maps cores onto a NoC architecture such that either the energy consumption o



With the use of a core layer, each aggregation switch only needs 2x100-GbE links, and the core layer is the only place where you need large numbers of 100-GbE ports.

Contact Us

For more information, pricing, or custom solutions, please contact us:

Website: <https://www.indzawo.co.za>

Email: sales@indzawo.co.za

Phone: +27 71 296 8473

Address: 22 Quantum Street, Midrand, 1685, Gauteng, South Africa

This document is for informational purposes only. Specifications subject to change without notice.

