

How to merge dual fiber optic routers from a telecom company



Overview

If you want speed and these fibre lines are from the same ISP, then you just ask them to bond the connections. They'll send you their modem that can do it. However if they're different ISP's or your ISP refuses. There are third party services that can set it up for. This guide walks you through everything you need to know about fiber ring networks—from basic concepts to topology diagrams and essential protocols. SD-WAN is one of the most robust and cutting-edge solutions that cater to small, medium, and large business locations and data center sites. Bridging two routers on one network isn't as common as it used to be (thanks to mesh Wi-Fi systems), but it can still be an effective way to improve network access in larger. Any possible way to convince ATT to just set up a second line if earthlink is basically going to do that and charge more?

Yes, it's possible to have multiple providers at one building.

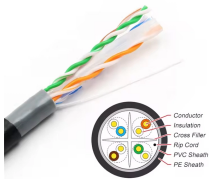
How to merge dual fiber optic routers from a telecom company



Learn if you can connect two routers to one fiber modem for better WiFi coverage. Discover setup methods and potential challenges.



In this article, we will explore the process of connecting two routers to an incoming fiber optic supply. This setup is particularly useful for those who wish to take advantage of additional ...



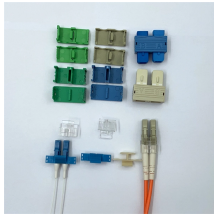
If your business opts for more robust solutions such as SD-WAN and the installation of two fiber optic connections with BGP, you will double your bandwidth and dramatically increase your reliability and ...



Since I rely on this service for work, I was thinking about getting COX Internet and installing a Dual WAN router with load balancing. I have an Asus AC mesh network, and I could ...



If you want speed and these fibre lines are from the same ISP, then you just ask them to bond the connections. They'll send you their modem that can do it. However if they're different ISP's ...



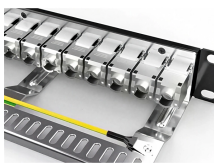
Learn how to design a fiber optic ring network with practical diagrams, topologies, and switch setup tips. Explore ring network switch options for industrial applications.



Yes, it's possible to have multiple providers at one building. I used to work for an ISP, and we actually had two different providers in our office. With two different networks, we had redundant paths if one ...



We'll show you how to connect two routers together on a network to expand Wi-Fi access. Make sure your second router supports WDS bridging or has "bridge mode." Bridging is a ...



You appear to not care about configuring routers, but rather the most efficient way of splitting an expensive FTTP Fibre connection so (2) different apartments can share it.



A common solution is to connect two routers on the same fibre optic line. In this article, Axarfusion will guide you through the steps to achieve this configuration and ensure that both routers ...

Software-Defined WanDual Internet Connections with Border Gateway ProtocolLoad Balancing RouterBridge Connection MethodThird-Party SoftwareWhy Do You Need to Get Internet Connection Bonding?A load-balancing router is designed to combine different internet connections into a single large broadcast. A dual connection load-balancing device can be a good investment for small, medium, and large branch offices. How to set up a load balancing router: 1. Begin by connecting modems to your router. This is done by attaching one end of the cable...See more on carrierbid

```

.b_imgcap_alttitle p strong,.b_imgcap_alttitle .b_factrow
strong{color:#767676}#b_results .b_imgcap_alttitle{line-height:22px}.b_imgcap_altit
le{display:flex;flex-direction:row-reverse;gap:var(--mai-smtc-padding-card-nested-
default)}.b_imgcap_alttitle .b_imgcap_img{flex-shrink:0;display:flex;flex-
direction:column}.b_imgcap_alttitle .b_imgcap_main{min-
width:0;flex:1}.b_imgcap_alttitle .b_imgcap_img>div,.b_imgcap_alttitle .b_imgcap_img
a{display:flex}.b_imgcap_alttitle .b_imgcap_img img{border-radius:var(--mai-smtc-
corner-card-default)}.b_hList img{display:block}.b_imagePair ner
img{display:block;border-radius:6px}.b_algo .vttv2 img{border-radius:0}.b_hList
.cico{margin-bottom:10px}.b_title .b_imagePair> ner,.b_vList>li>.b_imagePair>
ner,.b_hList .b_imagePair> ner,.b_vPanel>div>.b_imagePair> ner,.b_gridList
.b_imagePair> ner,.b_caption .b_imagePair> ner,.b_imagePair>
ner>.b_footnote,.b_poleContent .b_imagePair> ner{padding-bottom:0}.b_imagePair>
ner{padding-bottom:10px;float:left}.b_imagePair.reverse>
ner{float:right}.b_imagePair .b_imagePair:last-child:after{clear:none}.b_algo .b_title .
b_imagePair{display:block}.b_imagePair.b_cTxtWithImg>*{vertical-
align:middle;display:inline-block}.b_imagePair.b_cTxtWithImg>
ner{float:none;padding-right:10px}.b_imagePair.square_s>
ner{width:50px}.b_imagePair.square_s{padding-left:60px}.b_imagePair.square_s>
ner{margin:2px 0 0 -60px}.b_imagePair.square_s.reverse{padding-left:0;padding-
right:60px}.b_imagePair.square_s.reverse> ner{margin:2px -60px 0
0}.b_ci_image_overlay: hover{cursor:pointer}
sightsOverlay,#OverlayIFrame.b_mcOverlay sightsOverlay{position:fixed;top:5%;left:
5%;bottom:5%;right:5%;width:90%;height:90%;border:0;border-radius:15px;margin:0
;padding:0;overflow:hidden;z-index:9;display:none}#OverlayMask,#OverlayMask.b_
mcOverlay{z-index:8;background-
color:#000;opacity:.6;position:fixed;top:0;left:0;width:100%;height:100%}Cable Papa

```

Contact Us

For more information, pricing, or custom solutions, please contact us:

Website: <https://www.indzawo.co.za>

Email: sales@indzawo.co.za

Phone: +27 71 296 8473

Address: 22 Quantum Street, Midrand, 1685, Gauteng, South Africa

This document is for informational purposes only. Specifications subject to change without notice.

