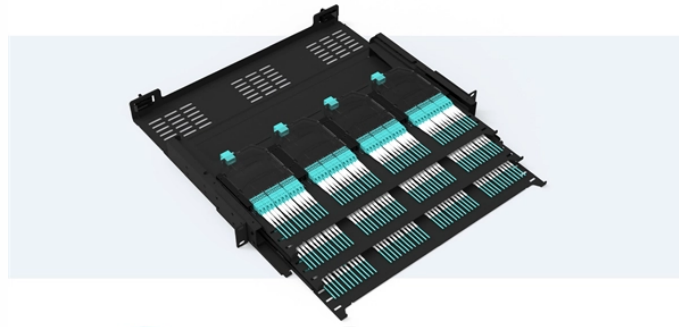


## How to install the angle iron bracket for the distribution box

### Pre-Terminated Patch Panel

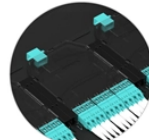
- Standard 19" width
- Max 144 fibers in 1U
- Ultra-High Density Ready



Dual-rail, easy install & maintain



Lightweight ABS MPO cassette



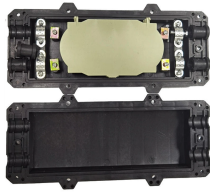
Premium sheet metal with matte coating



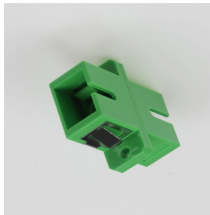
## How to install the angle iron bracket for the distribution box



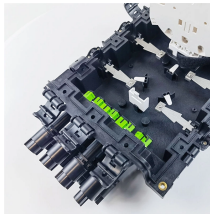
First of all, you need to have a simple understanding of the definition of a distribution box, and make it clear which kind of distribution box you want to install. This is important to properly install it.



The angle brackets are available at the blue box store in the carpentry section. I use a piece that is 3" by about 6" long and 90 bend across the middle, it lets you get 2 or more screws in ...



The angle brackets are available at the blue box store in the carpentry section. I use a piece that is 3" by about 6" long and 90 bend across the middle, it ...



During installation, simply mount brackets onto the front of the studs without the hassle of needing to align the panel on the sides.



Mount J-Box to the bracket using a minimum of two (2) screws through existing mounting holes in box. #8 x 5/8" self-drilling sheet metal screws are recommended. Application in conformance to local codes.



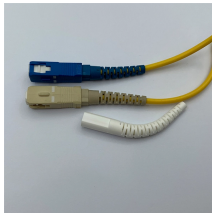
Choose from our selection of angle iron brackets, including brackets, structural framing, and more. Same and Next Day Delivery.



When you buy an angle iron, construction becomes a lot easier. Once it is set up properly, you can expect great structural support for your project.



Distribution Box Installation: Advanced Techniques. The installation of a distribution box is explored in detail, highlighting advanced techniques for achieving a professional and...



Learn how to install a distribution box safely and correctly. Covers wiring, placement, standards, and expert tips for a compliant setup.



From floor-mount to wall-mount box supports, we offer a variety of options to mount just one or up to 5 boxes. Find out how to save on installation time.

## Contact Us

For more information, pricing, or custom solutions, please contact us:

Website: <https://www.indzawo.co.za>

Email: [sales@indzawo.co.za](mailto:sales@indzawo.co.za)

Phone: +27 71 296 8473

Address: 22 Quantum Street, Midrand, 1685, Gauteng, South Africa

This document is for informational purposes only. Specifications subject to change without notice.

