

How to install industrial cover plates for electrical distribution boxes



Overview

Master junction box cover plate selection, precise sizing for proper fit, and the crucial safety steps required for flawless installation. A junction box cover plate is a finishing barrier secured over an electrical junction box, which houses the splices and connections of electrical wiring. This could be in a commercial area, in a unfinished basement or garage. more Audio tracks for some languages were automatically generated. Learn more Industrial Covers are a classy way to make surface mounted boxes look. Learn how to install a distribution box safely and correctly. 146 (B) shall be permitted to ground the receptacle to the box. At least one of the insulating washers shall be removed from receptacles that. The Leviton offering of Weatherproof Covers & Boxes comprises both 1- and 2- gang configurations that comply with the National Electric Code® (2017) Section 406. These covers accommodate Standard Toggle Switches, Duplex Receptacles, Decora®.

How to install industrial cover plates for electrical distribution boxes



Explore enclosure backplates and panels including subpanels, gland plates, barrier panels, and swing-out accessories for control enclosures.



Learn how to install a distribution box safely and correctly. Covers wiring, placement, standards, and expert tips for a compliant setup.



Industrial Covers are a classy way to make surface mounted boxes look great. This could be in a commercial area, in a unfinished basement or garage.



The best height for installing residential distribution boxes is 1.5 meters above the ground, while for industrial distribution boxes, the height depends on the space and the equipment ...



Explore enclosure backplates and panels including subpanels, gland plates, barrier panels, and swing-out accessories for control enclosures.



appropriate floor box mounting plates (FBMPxx), sold separately. Use blank plate (FB BNK) where no device is installed. All devices are to be installed in accordanc



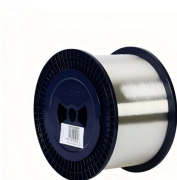
To effectively install an electric panel cover, follow these steps. Taking the time to prepare properly and follow safety guidelines will help ensure a secure, code-conscious fit.



These covers fit and close existing boxes and covers to support electrical devices, such as switches or receptacles. Electricians and contractors use covers when installing electrical and wiring systems to ...



The Leviton offering of Weatherproof Covers & Boxes comprises both 1- and 2- gang configurations that comply with the National Electric Code® (2017) Section 406.9 for weatherproof enclosures in damp ...



IntroductionUnderstanding The Components of A Distribution BoxSelecting The Right Distribution BoxSite Preparation and Location RequirementsElectrical Connections and WiringCompliance with Standards and RegulationsConclusionA distribution boxis a crucial part of any electrical system. It's divided into two main sections that work together to keep everything running smoothly and safely. See more on eabel Published: Feb 7, 2025SmartGuard



Master junction box cover plate selection, precise sizing for proper fit, and the crucial safety steps required for flawless installation.



This provision shall not apply to cover-mounted receptacles unless the box and cover combination are listed as providing satisfactory ground continuity between the box and the receptacle.

Contact Us

For more information, pricing, or custom solutions, please contact us:

Website: <https://www.indzawo.co.za>

Email: sales@indzawo.co.za

Phone: +27 71 296 8473

Address: 22 Quantum Street, Midrand, 1685, Gauteng, South Africa

This document is for informational purposes only. Specifications subject to change without notice.

