

How to install an electricity meter in a data center server rack



Overview

In this video, we walk step-by-step through the complete electrical path inside a data center — from utility power generation to the server rack. Each rack must safely deliver stable electrical power to dozens of servers, switches, and storage devices while maintaining reliability, airflow efficiency, and electrical safety. Modern infrastructures typically rely on rack-level Power Distribution Units (PDUs), industrial CEE connectors, and. The PX-3000 Series of Inline Power Meters simplifies monitoring of power usage and environmental conditions in the data center while allowing you to track the power on dedicated circuits. There is no need to remove or re-cable IT equipment. The rPDUs distribute power in the rack. The rPDUs are mounted vertically in a recessed channel. Efficient power management is essential for the smooth operation of data centers, where Power Distribution Units (PDUs) are paramount.

How to install an electricity meter in a data center server rack



Care should be taken with a vertical PDU to ensure it will fit within the overall internal height of the server cabinet. Most vertical PDUs will be mounted on the rear cabinet struts and can ...



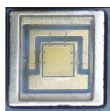
Installation Requirements: Proper conductor sizing, overcurrent protection, and grounding in accordance with local electrical codes. Professional electrical installation is essential for safety, code compliance, ...



Proper installation of components in a data center server rack is crucial for optimal performance, efficient maintenance, and long-term reliability of your IT ...



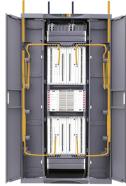
There is no need to remove or re-cable IT equipment. Just wire the inline meter into existing circuits and get real-time remote power monitoring, including current (amps), voltage, power (kVA, kW) and ...



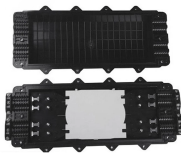
This manual contains important instructions that you should follow during installation and operation of the Dell Metered Rack Power Distribution Unit (rPDU). Please read all instructions before operating ...



In this video, we walk step-by-step through the complete electrical path inside a data center — from utility power generation to the server rack.



Proper installation of components in a data center server rack is crucial for optimal performance, efficient maintenance, and long-term reliability of your IT infrastructure. This guide provides detailed ...



This article guides you on the importance of PDUs for data centers and how to install and configure a data center PDU.



From understanding your power needs, choosing the right PDU, and navigating the installation process, to maintaining your PDU post-installation – it might seem like a daunting task, but with this guide, ...



Learn how power flows inside modern data center racks—from facility power to rack PDUs. Discover how E-abel server cabinets and CEE connectors create safe, scalable rack power ...



Learn how to correctly install power distribution units (PDUs) in your server rack for efficient and reliable power management.

Contact Us

For more information, pricing, or custom solutions, please contact us:

Website: <https://www.indzawo.co.za>

Email: sales@indzawo.co.za

Phone: +27 71 296 8473

Address: 22 Quantum Street, Midrand, 1685, Gauteng, South Africa

This document is for informational purposes only. Specifications subject to change without notice.

