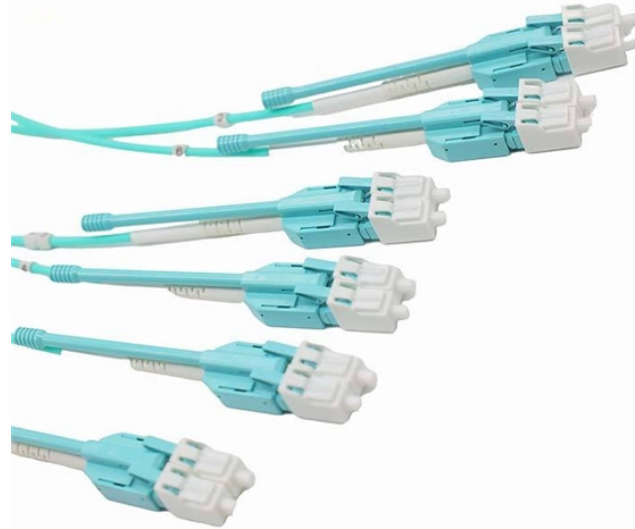


How to install a secondary distribution box in a shed



Overview

In this comprehensive guide, we will walk you through the step-by-step process of wiring a subpanel in your shed. From gathering the necessary materials to testing the electrical system, we will cover every aspect of the installation. Installing an electrical subpanel in a detached structure, such as a shed, transforms it into a fully functional workspace by providing safe and reliable power distribution. A subpanel acts as a secondary distribution point fed power directly from the main service panel of the house. This setup provides increased flexibility and ease of use for your electrical needs. I have added internal wiring for lights and small power tools, but the circuit breaker box I have installed in the shed is pretty jury rigged with an extension cord that makes it all. Installing a subpanel requires careful planning, starting with precise load calculations to determine the correct size, including for what might be the smallest sub panel needed for a project.

How to install a secondary distribution box in a shed



If you want to add several electrical circuits to your backyard storage shed or studio shed you will need to add an electrical sub panel with circuit breakers. This allows you to have multiple circuits in the ...



When you run out of space in your service panel, a subpanel is the best solution. Use these tips from a master electrician to install one safely.



If you've built a home extension or want to convert a detached garage or shed, you'll need to consider how to supply these spaces with electricity. One way to do this is by wiring the separate ...



When you run out of space in your service panel, a subpanel is the ...



We have a new shed and would like to install an electrical circuit to it. I have added internal wiring for lights and small power tools, but the circuit breaker box I have installed in the shed is pretty jury ...



A complete guide for electricians on installing a subpanel, covering load calculations, feeder wire sizing, and NEC rules for even the smallest sub panel.



I am installing an electrical sub panel for my shed. Having power in the shed is going to be a nice addition that any shed owner should have. Follow along as I get this project done. ...more



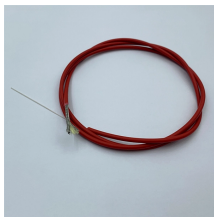
In this comprehensive guide, we will walk you through the step-by-step process of wiring a subpanel in your shed. From gathering the necessary materials to testing the electrical system, we ...



Learn how to properly wire a subpanel in a separate building to ensure safe and efficient electrical distribution.



Detailed guide on planning and installing a shed sub panel. Master load calculations, feeder runs, and code-compliant neutral/ground separation.



Learn how to wire a subpanel in a shed using an underground connection to keep it safe and free from hazards.

Contact Us

For more information, pricing, or custom solutions, please contact us:

Website: <https://www.indzawo.co.za>

Email: sales@indzawo.co.za

Phone: +27 71 296 8473

Address: 22 Quantum Street, Midrand, 1685, Gauteng, South Africa

This document is for informational purposes only. Specifications subject to change without notice.

