

How to install a power distribution box in a factory



Overview

This video shows our power cabinet assembly process on the factory floor. Watch technicians use an electric drill to fasten distribution-box components, install brackets, route wiring channels, and prepare units for final inspection and packing. We focus on workflow. In this guide, we'll break down everything you need to know to install a distribution box correctly and confidently. Choose the right box based on environment (indoor/outdoor), load capacity, and durability. Check for proper IP/NEMA ratings and material quality. The electrical installation process for a. The installation of electrical systems during the construction of pre-engineered warehouses and factories plays a vital role in overall project quality, especially when integrated with shed fabrication processes to ensure safety, accuracy, and effective long-term operations.

How to install a power distribution box in a factory



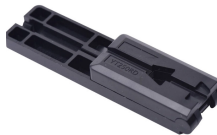
It outlines 4 steps: 1) Pre-installation preparation including reviewing plans and ensuring safety, 2) Mounting panels and running wiring, 3) Installing circuit breakers or fuses, and 4) Terminating ...



This video shows our power cabinet assembly process on the factory floor. Watch technicians use an electric drill to fasten distribution-box components, install brackets, route wiring...



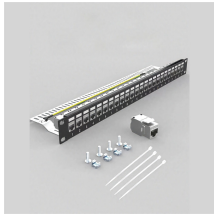
The precise process for installing electrical systems in warehouses and factories according to standards and the key points to note. Learn how to efficiently install electrical systems ...



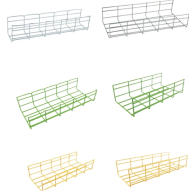
Box installation: Make sure that Distribution box has been correctly installed and fixed. Material preparation: Prepare the required circuit breakers, wires, wiring ties and other materials, and ...



This article provides a detailed overview of the entire process of installing a distribution box, from pre-installation preparation to post-installation maintenance, and summarizes common ...



Learn how to install a distribution box safely and correctly. Covers wiring, placement, standards, and expert tips for a compliant setup.



Whether upgrading an aging electrical panel or setting up your facility, this guide will walk you through the critical steps to installing an MCB Distribution Box safely.



The distribution box isn't just metal and wires - it's the control center deciding which equipment gets power, how much, and when. Get its layout wrong, and you're building headaches into your ...



First of all, you need to have a simple understanding of the definition of a distribution box, and make it clear which kind of distribution box you want to install. This is important to properly install it.



Explore the essential steps and considerations for safe and effective factory electrical installations.

Contact Us

For more information, pricing, or custom solutions, please contact us:

Website: <https://www.indzawo.co.za>

Email: sales@indzawo.co.za

Phone: +27 71 296 8473

Address: 22 Quantum Street, Midrand, 1685, Gauteng, South Africa

This document is for informational purposes only. Specifications subject to change without notice.

