

How to install a high-voltage control busbar



Overview

In this Shorts video, watch a step-by-step demo of installing riser bus bars and terminating MW cable joints for industrial electrical systems. Learn pro techniques for secure, durable connections and flawless finishing. Perfect for electricians, engineers, and electrical. Ever wondered how busbars, the unsung heroes of electrical distribution, are processed and installed?

This article delves into the intricate steps of busbar selection, preparation, and installation, ensuring efficient and safe power distribution. Whether you're a seasoned professional or an enthusiastic. Page 5 Proper installation, operation, and maintenance are critical to the performance of the equipment. Correct operating conditions in terms of input voltage, current, and the fault capacities must be ensured at the time of installing the Vertiv™ High PowerBar (HPB) UL 857. Before starting the installation of power electrical busbar following tools shall be arranged: PREPARATION FOR BUS BAR INSTALLATION The.

How to install a high-voltage control busbar



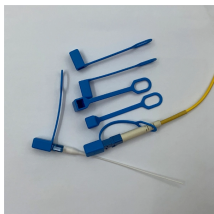
This guide provides a complete breakdown of the standardized process for high and low voltage switchgear installation. We'll detail every key step, from initial preparation to final checks.



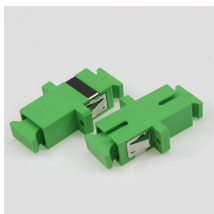
With busbar power, there is less bending, drilling, and tapping copper in preparation for deployment, and panels utilizing busbar can be mounted and installed in a fraction of the time compared to block-and ...



In this Shorts video, watch a step-by-step demo of installing riser bus bars and terminating MW cable joints for industrial electrical systems.



Proper transport, storage, installation, assembly, commissioning, operation and maintenance are required to ensure that the products operate safely and without any problems. The permissible ...



Assemble the busbar connection while installing each cubicle. The busbar shims and hardware bag in the cubicle packaging. Access the busbars through the side access of the cubicle. NOTE: It is also ...



Ever wondered how busbars, the unsung heroes of electrical distribution, are processed and installed? This article delves into the intricate steps of busbar selection, preparation, and ...



The engineer should satisfy the procedures provided by QA/QC team to ensure that the electrical bus bar installation meets the specified engineering requirements and approved drawings.



WILLELE designs and manufactures standard and custom bus bar insulators for low- and high-voltage panels. Using fiberglass-reinforced DMC/BMC materials and tight in-process quality control, our ...



Correct operating conditions in terms of input voltage, current, and the fault capacities must be ensured at the time of installing the Vertiv™ High PowerBar (HPB) UL 857.



If you've ever wondered how to achieve a flawless busbar installation, you're in the right place. This guide will walk you through every step of the process, from selecting the right materials to ...

Contact Us

For more information, pricing, or custom solutions, please contact us:

Website: <https://www.indzawo.co.za>

Email: sales@indzawo.co.za

Phone: +27 71 296 8473

Address: 22 Quantum Street, Midrand, 1685, Gauteng, South Africa

This document is for informational purposes only. Specifications subject to change without notice.

