

How to install a distribution box that is obstructed by rail tracks



Overview

Learn how to wire a distribution box step by step! This video shows real on-site footage of electrical installation, demonstrating safe and standardized wiring. In this guide, we'll break down everything you need to know to install a distribution box correctly and confidently. Check for proper IP/NEMA ratings and material quality. Whether it is residential buildings, commercial facilities or industrial sites, the. Prescribed by the PUBLIC UTILITIES COMMISSION OF THE STATE OF CALIFORNIA GENERAL ORDER No. 128 January 2006 (This Page Intentionally Left Blank) Adopted October 17, 1967 Effective December 12, 1967 Decision No. 8208 Change list- The following is a list of Decisions and. This specification applies to the design and installation of utility wires and cables (power or communication), crossing and/or parallel, over or under railroad tracks and property owned by CSX Transportation (CSXT).

How to install a distribution box that is obstructed by rail tracks



To avoid delays, early consideration must be given to railroad requirements when the planning phase is started on a project.



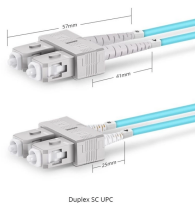
This article provides a detailed overview of the entire process of installing a distribution box, from pre-installation preparation to post-installation maintenance, and summarizes common ...



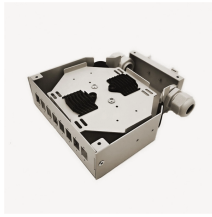
This specification applies to the design and installation of utility wires and cables (power or communication), crossing and/or parallel, over or under railroad tracks and property owned by CSX ...



Before starting the installation, finding a proper place for putting the distribution box is crucial, because it largely decides the safety and convenience of maintenance. Let's see what factors ...



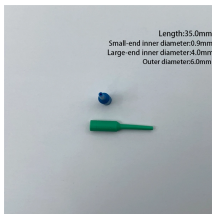
Learn how to wire a distribution box step by step! This video shows real on-site footage of electrical installation, demonstrating safe and standardized wiring methods used by...



The following rules cover the requirements for installation of equipment in manholes, building vaults, rooms, or other enclosures and self-contained surface-mounted ...



Learn how to install a distribution box safely and correctly. Covers wiring, placement, standards, and expert tips for a compliant setup.



Power track systems with distributed electrical systems have revolutionized the age-old way of managing power needs in modern homes and offices, and this article serves as an in-depth guide on ...



It should be installed in the dry and ventilated parts without any obstruction, so it is convenient to use. Distribution boxes must not be installed in the boxes to prevent fire.



To install one, you'll need to strip the ends off all the wires that will be in the box. To complete the electrical circuit, tie together the same-colored wires and hold them in place with wire nuts.



It should be installed in the dry and ventilated parts without any obstruction, so it is convenient to use. Distribution boxes must not be installed in the boxes to ...



Effectively grounded switch handles and supply or communication equipment cases (such as fire alarm boxes, control boxes, communication terminals, meters, or similar equipment cases) may be ...

Contact Us

For more information, pricing, or custom solutions, please contact us:

Website: <https://www.indzawo.co.za>

Email: sales@indzawo.co.za

Phone: +27 71 296 8473

Address: 22 Quantum Street, Midrand, 1685, Gauteng, South Africa

This document is for informational purposes only. Specifications subject to change without notice.

