

How to inspect a 24-port cable management rack



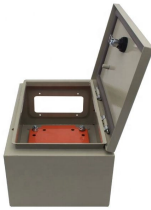
How to inspect a 24-port cable management rack



NOTE: If your cabinet has a door, first check that the front clearance between the rack rail and the door is sufficient to accommodate the cable manager.



Server racks and cable management systems are the backbone of any organized IT environment, from small office server closets to enterprise data centers. But with dozens of rack ...



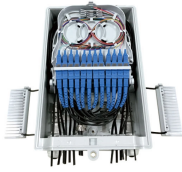
The SuperRack also has 1U and 2U brackets with cable management troughs that can be mounted to EIA rails for supporting rack components. Use the procedures below for installing and uninstalling this ...



In this article, you will learn everything about the basics, implementation and benefits of structured cable management in a server rack - including a practical example and the integration of powerful cable ...



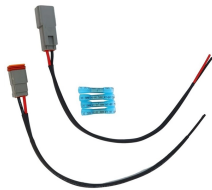
Practical, engineer-first guide to keeping patch cords under control around patch panels and switches—without killing airflow or turning every MAC ...



2026 Guide to Network Rack Cable Management. Includes Rack Unit Calculator, PoE++ thermal planning, Grounding safety, and Cat6A vs Cat6 advice for 10Gbps infrastructure.



The investment in proper cable management pays dividends through reduced troubleshooting time, improved system reliability, and easier future upgrades. ...



The following information provides a list of the features of each cable management option: CMA Standard: • Enables use of all I/O connections • Manages and protects full set of cables during ...



2026 Guide to Network Rack Cable Management. Includes Rack Unit Calculator, PoE++ thermal planning, Grounding safety, and Cat6A vs Cat6 advice ...



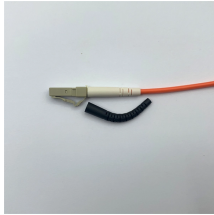
This guide offers a comprehensive look at server rack cable management, covering its definition, key components, common challenges, best ...



Inspect cable management systems quarterly for loose connections, damaged cables, or airflow obstructions. Conduct comprehensive audits annually to verify the accuracy of documentation ...



During the forward cabling process, the use of appropriate cabling materials is essential, along with cable management boards and cable management charts. When combined with proper cabling ...



Master network cable management with this complete guide. Learn best practices, tools, and tips to keep your setup organized, efficient, and easy to maintain.



This video covers the basics of patching in a 24 or 48 port panel in a small business or possibly a large home rack.



Leave enough clearance in front of the rack so that you can open the front door completely (~25 inches) and approximately 30 inches of clearance in the back of the rack to allow ...



Discover rack unit sizing, cable management, labeling, bonding, and grounding for optimal performance and reliability.

Contact Us

For more information, pricing, or custom solutions, please contact us:

Website: <https://www.indzawo.co.za>

Email: sales@indzawo.co.za

Phone: +27 71 296 8473

Address: 22 Quantum Street, Midrand, 1685, Gauteng, South Africa

This document is for informational purposes only. Specifications subject to change without notice.

