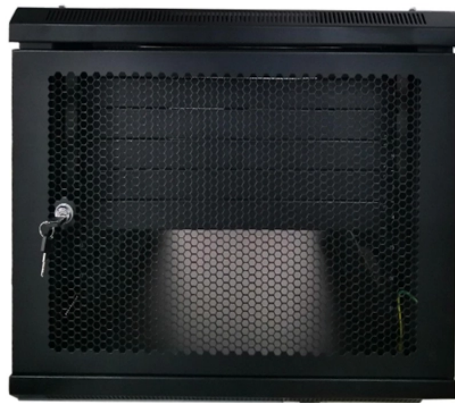


How to insert optical fiber into a wall-mounted optical distribution box



Overview

Well, one answer lies in the power of understanding how to install a wall mount fiber enclosure. Setting up your network involves numerous steps, but fear not! We've got a detailed guide to take you from zero to hero in no time flat. But before we dive in. Before we start installing fiber optics in a fiber optic distribution box, we should first understand its construction. Email us using the Request a Quote below, or give our team a call. Have any questions?

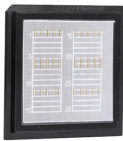
Talk with us directly using LiveChat.



How to insert optical fiber into a wall-mounted optical distribution box



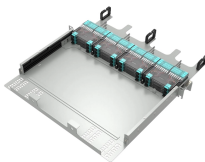
Optic fiber splicing and termination: Use splicing panel and distribute/terminal panel to route and splice the fiber, then terminal the connector at the inner side of the adapter.



Our team will make sure the configuration is tailored to your needs and will provide a detailed quote. Email us using the Request a Quote below, or give our team a call.



In general, installing the optical fiber distribution box can be divided into three steps: installing the optical fiber distribution box on the rack, introducing the optical cable into the optical ...



Installing a wall mount fiber enclosure might seem like a daunting task, but with this step-by-step guide, you're well on your way to enhancing your network setup.



In this blog, we will discuss the two types of fiber optic cables and the role of a simple yet essential piece of equipment in the fiber laying procedure- the, the Fiber Termination Box, or FTB.



The installation of an optical fiber distribution box is a multi-step process, and the following is a detailed installation guide:



Have any questions? Talk with us directly using LiveChat.



Indoor wall mounted optical fiber distribution box
#indoor #wallmounted #distribution #box #cable
#splicetray...more



Read and understand this procedure (as well as the instructions provided with related assemblies) before beginning an installation. Do not discard this instruction; keep it on hand for future reference. ...



Insert the cable into the openings provided in the junction box. Follow the manufacturer's instructions to correctly connect the fiber optic cable to the junction box.

Contact Us

For more information, pricing, or custom solutions, please contact us:

Website: <https://www.indzawo.co.za>

Email: sales@indzawo.co.za

Phone: +27 71 296 8473

Address: 22 Quantum Street, Midrand, 1685, Gauteng, South Africa

This document is for informational purposes only. Specifications subject to change without notice.

