

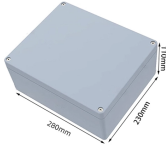
How to identify the positive and negative terminals in a distribution box circuit



Overview

According to master electrician James Hornof, for DC power, the red wire is generally positive and the black wire is usually negative. The red wire is a phase 2 hot wire, and the white wire. In simple terms, positive and negative terminals refer to the two opposite poles of a power source, such as a battery or an outlet. The positive terminal is the source of electrons, and the negative terminal is where electrons flow towards. Polarity and orientation markings of SMDs in a PCB layout. They are connected to the opposite end of the power source compared to the. The most basic switch, a single-pole/single-throw (SPST), is two terminals with a half-connected line representing the actuator (the part that connects the terminals together).

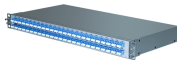
How to identify the positive and negative terminals in a distribution



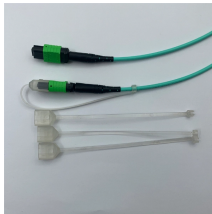
Don't worry, it's not as confusing as it sounds! With help from professional electricians Ricardo Mitchell and James Hornof, we're going to explain everything you need to know so you can ...



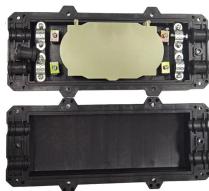
For a voltage source, the positive terminal is clearly defined by the + sign on the schematic symbol. The current is defined as positive going into the + terminal. For a current source, the symbol shows a ...



This article will delve into the details of identifying the positive terminal, covering the basics of electrical polarity, methods for identification, and best practices for handling electrical ...



When current flows between two points or poles, one of the poles will have more electrons accumulated than the other. The pole with fewer electrons is called the positive terminal. The pole having more ...



Ever wondered how to tell the positive and negative terminals of electronic components? In this video, we'll break it down step by step: Electrolytic Capacitors: Look for the stripe or...



The positive, anode is the terminal running into the flat edge of the triangle. The negative, cathode extends out of the line in the symbol (think of it as a - sign).



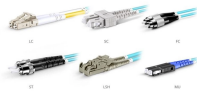
To identify which wire is positive and which is negative, it helps to remember that positive wire often connects to a device's power input or anode, while the negative wire connects to the ...



Power sources, such as a battery, are often depicted by a series of long and short parallel lines, where the longer line traditionally denotes the positive terminal and the shorter line represents the negative ...



You might feel a little nervous about opening your distribution box, but you can do it safely if you follow some simple steps. Let's walk through what you need to know before you start.



OM3 Fiber Patch Cable Family

This article will delve into the details of identifying the positive terminal, covering the basics of electrical polarity, methods for identification, and best practices for handling electrical ...



In contrast, negative terminals are the points in a device or circuit where electric current exits or returns from the device. They are connected to the opposite end of the power source ...

Contact Us

For more information, pricing, or custom solutions, please contact us:

Website: <https://www.indzawo.co.za>

Email: sales@indzawo.co.za

Phone: +27 71 296 8473

Address: 22 Quantum Street, Midrand, 1685, Gauteng, South Africa

This document is for informational purposes only. Specifications subject to change without notice.

