

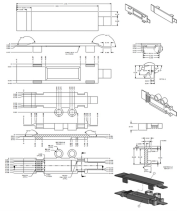
How to distinguish between multimode optical modules



Overview

Single-mode modules have a smaller core diameter of about 9 microns, while multimode modules have a larger core, typically 50 or 62. For a more accurate method, you can use a power meter or an Optical Time-Domain Reflectometer (OTDR). Whether you're designing a short-range data center network or a long-distance metro backbone, understanding the distinctions between single vs. multi-mode modules is essential. This guide breaks down these two critical dimensions of optical transceiver design to help. This guide breaks down practical differences—core geometry, wavelengths, connector types, performance limits, cost trade-offs, and ideal use-cases—so you can pick the right optical modules with confidence. Let's break down these terms in simple, clear language with practical examples. 2-core o In optical modules, "core".

How to distinguish between multimode optical modules



Correctly distinguishing single-mode and multimode optical modules is critical for matching fiber patch cords, ensuring transmission stability, and avoiding network failures. This article shares 4 practical ...



Is your data center or campus network best served by Single Mode or Multimode Optical Modules? Choosing between Single Mode and Multimode Optical Modules will shape cost, reach and upgrade ...



The secret lies in fiber optic technology, and understanding the basics—1-core, 2-core, Single Mode (SM), and Multi-mode (MM)—is key to ...



Choosing between single-mode and multi-mode optical modules depends on the specific requirements of your network application, including ...



Single Mode vs Multimode SFP Modules: Compare fiber types, wavelengths, cost, and transmission distance to select the right optical transceiver for your network.



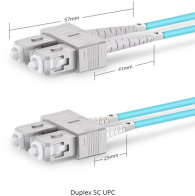
Discover how to identify if your SFP (Small Form-factor Pluggable) module is single-mode or multimode. Look for SM or MM labels, check color coding, and consult manufacturer specs ...



Optical Modules differ by fiber count and mode: single/dual fiber affects cabling, while single-mode/multi-mode impacts distance and speed in networks.



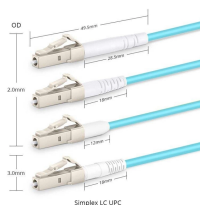
Singlemode and multimode SFP modules are two primary categories of hot-swappable optical modules used in optical networks. Each module type uses LC interfaces, and professionals ...



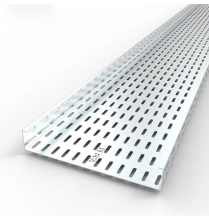
Choosing between single-mode and multi-mode optical modules depends on the specific requirements of your network application, including transmission distance, bandwidth needs, cost ...



When in doubt, checking the cable specifications, looking at the color, and knowing the intended application can help you identify whether a fiber optic cable is single-mode or multimode.



Optical Modules differ by fiber count and mode: single/dual fiber affects cabling, while single-mode/multi-mode impacts distance and speed in networks.



Learn how to identify single-mode and multimode SFP modules with our comprehensive guide. Explore SFP features, testing methods, and compatibility.



The secret lies in fiber optic technology, and understanding the basics—1-core, 2-core, Single Mode (SM), and Multi-mode (MM)—is key to mastering this field.

Contact Us

For more information, pricing, or custom solutions, please contact us:

Website: <https://www.indzawo.co.za>

Email: sales@indzawo.co.za

Phone: +27 71 296 8473

Address: 22 Quantum Street, Midrand, 1685, Gauteng, South Africa

This document is for informational purposes only. Specifications subject to change without notice.

