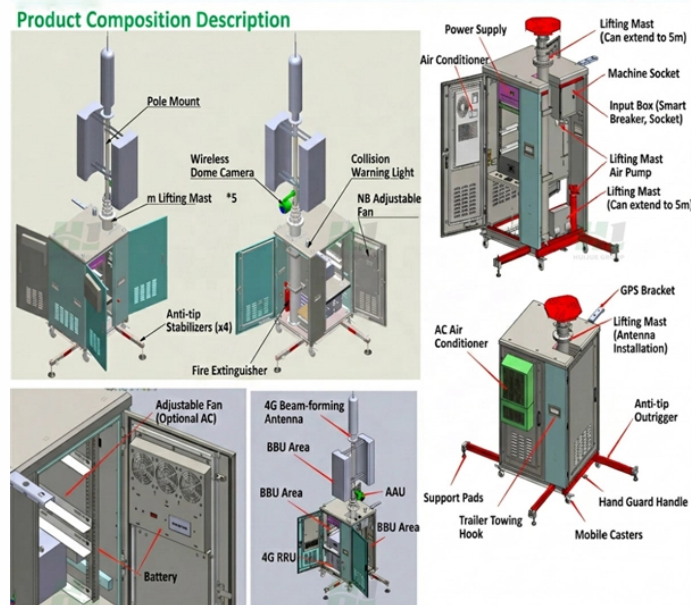


How to cover the glass of the cable tray



Overview

In this video, we will show you how to use 3 different cover clamps (PKP-SP1, PKP-SP2 & PKP-SPM1) that enables additional mechanical fastening of the cable trays cover. Cable tray cover is used for extra demanding conditions, e. Usually, it has another section that encloses the cables within the tray called a “cover” or “lidding” section. Based on your particular needs and requirements, you can switch to the type of. Cable tray covers are protective enclosures that shield cables from environmental hazards while ensuring compliance with safety standards like NEC 392. These essential components: Example: Stainless steel covers meet NEC 392. SFF duplex fiber optic adapter with zirconia ceramic split sleeves. Supplied in four 30 long pieces. Used to fully. Cable tray covers may appear secondary in electrical system planning, but their influence on infrastructure integrity is undeniable.



How to cover the glass of the cable tray



A complete guide to cable tray cover types: Compare 9+ designs, material specifications (NEMA/IEC), selection factors & maintenance best practices.



Ventilated Cable Tray Cover, 12in Wide, 3.3ft Long, Cablo CVN 300PG. 1 pkg = (3) 3.3ft Covers for (1) 10ft Tray



Cover eliminates dirt and dust build-up on cable and fabricate on-site to fit changes in levels and built-in tabs for permanent attachment to tray. 3- 3.3" covers are included in each package ...



That is, it covers the top section of the cable tray. In this guide, you will learn about the different types of cable covers and how to choose a perfect option.



Quality Guidelines for Cable Tray Works This document outlines the quality guidelines and methodology for dismantling and re-installation of cable trunk covers in civil and electrical works.



In this video, we will show you how to use 3 different cover clamps (PKP-SP1, PKP-SP2 & PKP-SPM1) that enables additional mechanical fastening of the cable trays cover.



Eaton's submittal builder tool for B-Line series cable ladder and tray allows you to easily filter, select and download straight section, fitting and accessory submittals.



Explore cable tray cover types, materials & standards to optimize safety and system ROI. Read more in our expert guide.



NewReach's Cable Tray Cover is designed to keep cables organized and contained within the tray. This enhances airflow and helps prevent tangling, which can lead to overheating and potential malfunctions.



Explore various types of cable tray covers and learn how to choose the right one for your project. Improve safety, durability, and cable protection today.

Contact Us

For more information, pricing, or custom solutions, please contact us:

Website: <https://www.indzawo.co.za>

Email: sales@indzawo.co.za

Phone: +27 71 296 8473

Address: 22 Quantum Street, Midrand, 1685, Gauteng, South Africa

This document is for informational purposes only. Specifications subject to change without notice.

