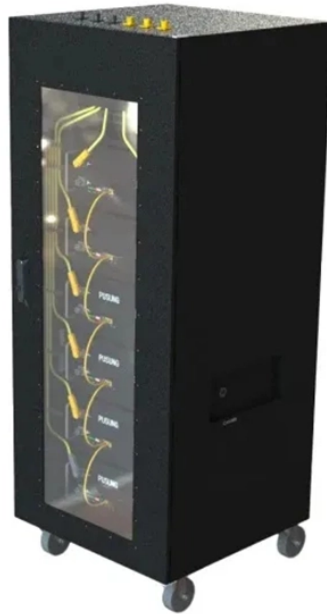


How to connect the fiber optic patch cord heating element



Overview

Slide heavy duty heat-shrink tubing over the fused section, making sure to cover both fiber splices and buffer tubes. Proper connection of fiber optic cables is essential to harness these benefits fully, as even minor errors can lead to significant performance issues like signal loss. This article will guide you through the necessary tools, materials, and methods on how to connect fiber optic cables effectively. Connecting a fiber patch cord involves carefully inserting it into the appropriate adapter after ensuring the connectors are clean. The process may differ slightly depending on the type of connector. This guide will help you understand fiber construction, installation steps, real attenuation.

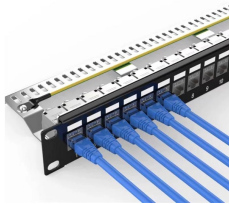
How to connect the fiber optic patch cord heating element



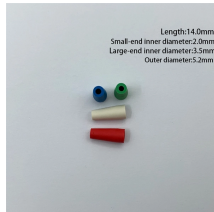
Yingda outlines the tools and materials needed to install fiber optic patch cords, as well as a complete step-by-step installation guide and important safety considerations to take.



When installing, align the key on the connector body with the keyway on the transceiver or adapter. When removing the LC connector, press the connector latch downward. Copyright © 2019 FS ...



This guide will help you quickly understand the main types of fiber patch cords and how to choose the right solution for your project - and how ZION ...



This article will guide you through the necessary tools, materials, and methods on how to connect fiber optic cables effectively, ensuring you achieve optimal performance from your fiber optic ...



In this video, we'll cover the essential guidelines for installing fiber optic cables, helping you avoid costly mistakes and ensure a high-quality, reliable connection.



This guide will help you quickly understand the main types of fiber patch cords and how to choose the right solution for your project - and how ZION can support you with stable quality, ...



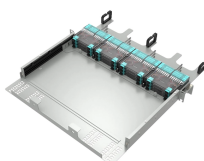
Use built-in heating element to evenly shrink the splice protector. For extra strain relief, secure fibers inside a splice tray anchored to a wall-mounted enclosure. Maintain minimum 30mm ...



By following these simple yet important steps, you can ensure a reliable and efficient fiber optic connection, making sure that your network is robust and has the optimal performance it should ...



This guide will help you understand fiber construction, installation steps, real attenuation behavior, and best practices validated by NS Comm Technical Validation Lab and independent data ...



By following these steps and tips, you can ensure that your fiber patch cords are properly installed and terminated, providing reliable and efficient signal transmission in your optical fiber ...



In this article, we will introduce you specific operation guidelines and related suggestions from three aspects of fiber optic patch cord connection, disconnection methods and daily ...

Contact Us

For more information, pricing, or custom solutions, please contact us:

Website: <https://www.indzawo.co.za>

Email: sales@indzawo.co.za

Phone: +27 71 296 8473

Address: 22 Quantum Street, Midrand, 1685, Gauteng, South Africa

This document is for informational purposes only. Specifications subject to change without notice.

