

How to connect the automatic wiring of the distribution box



Overview

In this video, we'll walk you through the process of wiring a home distribution box with a detailed connection diagram. What Is a Distribution Box?

A distribution box, also known as an electrical distribution board, is a critical component in electrical systems. Material preparation: Prepare the required circuit breakers, wires, wiring ties and other materials, and ensure that they meet the design drawings and installation requirements. Single Phase Distribution Box generally consists of Double Pole MCBs, Single Pole MCBs, and RCCBs.

How to connect the automatic wiring of the distribution box



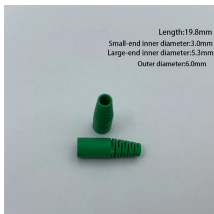
Find out how to properly wire an electrical panel box with a comprehensive diagram and step-by-step instructions.



First of all, you need to have a simple understanding of the definition of a distribution box, and make it clear which kind of distribution box you want to install. This is important to properly install it.



The document is intended to help electrical engineers and supervisors install distribution boards for electrical projects according to contract requirements and specifications.



In this video, we'll walk you through the process of wiring a home distribution box with a detailed connection diagram. Whether you're an electrician or a DIY enthusiast, this guide will help ...



Running, walking, cycling, swimming, skiing, triathlons - no matter how you move, you can record your active lifestyle on Garmin Connect. It's the only online community created specifically for Garmin ...



Learn how to connect a distribution box with this easy-to-follow, step-by-step guide. From tools and materials needed to common installation mistakes and solutions, this comprehensive article will ...



Wiring Direction: Wiring between the main circuit breaker and each branch circuit breaker in the box generally goes on the left, and the wiring out of the distribution box generally goes on the ...



In modern electrical systems, cable distribution boxes (also known as electrical distribution boxes or distribution boxes) play a crucial role as the key hub for managing, distributing, ...



With Connect, each of your students can enjoy a personalized digital learning experience designed to help them optimize study time and ramp up their grade potential.



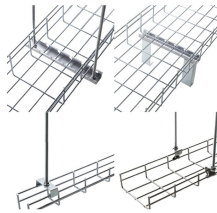
Connect The version/tag is PAAM_B_20241205_4006



Learn how to install a distribution box safely and correctly. Covers wiring, placement, standards, and expert tips for a compliant setup.



Wiring Direction: Wiring between the main circuit breaker and each branch circuit breaker in the box generally goes on the left, and the wiring out of ...



Hey, in this article we are going to see the Single Phase Distribution Box Wiring Diagram and Connection Procedure. A distribution board or distribution box is where the main power supply is ...



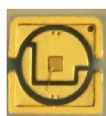
Connect - Researcher App Loading



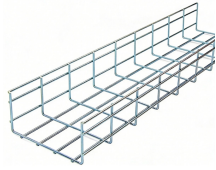
In this video, we'll walk you through the process of wiring a home distribution box with a detailed connection diagram.



Home of Peer Review.



Forgot your password? By clicking "Sign In", I confirm that I have read and agree to the terms of the McGraw Hill Terms of Use, the Video Viewing Notice, the Consumer Purchase Terms if applicable, ...



Forgot your password? Forgot your username?
Need help? ©2026 McGraw Hill. All Rights
Reserved.

Contact Us

For more information, pricing, or custom solutions, please contact us:

Website: <https://www.indzawo.co.za>

Email: sales@indzawo.co.za

Phone: +27 71 296 8473

Address: 22 Quantum Street, Midrand, 1685, Gauteng, South Africa

This document is for informational purposes only. Specifications subject to change without notice.

