

How to connect multi-core single-mode optical fibers



Overview

This guide will break down the professional methods to achieve seamless single-mode to multi-mode conversion, ensuring your network integrity and performance. ☐☐ Why Can't You Directly Connect SMF and MMF?

At its heart, the incompatibility is physical. But what happens when you need to connect an existing multi-mode campus network to a new single-mode service provider link?

You can't just splice them together. These differences determine which transceivers work with which fiber and how far signals can travel. Let's analyze the differences between multimode and single-mode fiber to understand why networks require fiber mode conversion and. Using fiber fusion splicer to Splicing a single-mode fiber to a multimode fiber is not recommended, but sometimes it has to be done. Single-mode fiber sends light in one straight path, while multimode fiber sends light in many paths.

How to connect multi-core single-mode optical fibers



The pivotal element is a triangular cross-section 3D multimode interference (MMI) coupler, supplemented with S-bends and adiabatic tapers to facilitate the splitting of a signal from a single ...



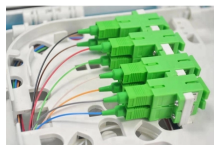
It has been demonstrated the need to constitute a new standard for multi-core fibers to the their mass coupling was simple and cheap. An analysis of use of fixed and reconnected ...



The Multi-Core Fiber Coupling Connector offering up to 7 independent cores in a single cable for hyperscale data centers and fiber optic submarine cable.



There are two main types of fiber optic cables: single mode fiber and multimode fiber. Single mode fiber optic cables feature a narrow core diameter, allowing only a single mode of light to ...



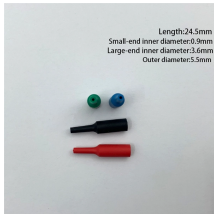
If you are splicing single-mode fiber to multimode fiber, avoid direct splicing where precision is required. Use mode conditioning patch cords, media converters, or patch panels to make ...



The pivotal element is a triangular cross-section 3D multimode interference (MMI) coupler, supplemented with S-bends and adiabatic tapers to ...



Discover the complete guide on converting multimode to single-mode fiber in communication networks. Understand the differences and learn the necessary steps.



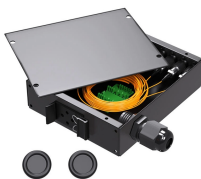
Convert fiber between multimode and single mode using smart methods for better speed, longer distance, and reliable network performance.



Let's analyze the differences between multimode and single-mode fiber to understand why networks require fiber mode conversion and how to convert multimode to single-mode fiber and vice versa.



Learn how single-mode and multi-mode transceivers differ, compatibility rules, testing tips, and best practices for reliable fiber deployments.



Most optical fibers have a single fiber core, which is usually located on the fiber axis. However, there are also specialty fibers containing multiple cores, which may e.g. be arranged on a ring around the fiber ...

Contact Us

For more information, pricing, or custom solutions, please contact us:

Website: <https://www.indzawo.co.za>

Email: sales@indzawo.co.za

Phone: +27 71 296 8473

Address: 22 Quantum Street, Midrand, 1685, Gauteng, South Africa

This document is for informational purposes only. Specifications subject to change without notice.

